
type A
type B

All dimensions in millimetres

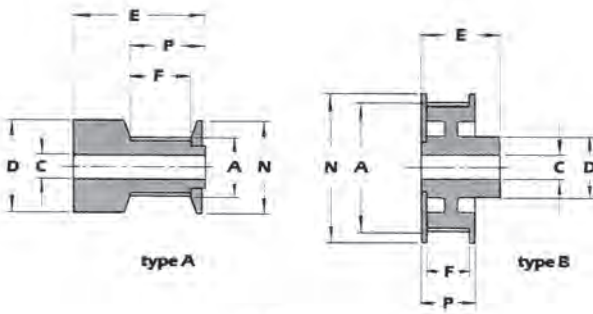
No. Teeth	Type	Pitch dia	Outside dia A	Bore dia C	Boss dia D	Overall length E	Face-width F	G	K	Flange dia N	P	Catalogue No.
10	A	6.477	5.97	3.0	10.0	16.0	7.0	1xM2.5	13.0	10.0	9.0	10MP025
12	A	7.772	7.26	3.0	11.0	16.0	7.0	1xM2.5	13.0	11.0	9.0	12MP025
14	A	9.068	8.56	3.0	12.5	16.0	7.0	1xM2.5	13.0	12.5	9.0	14MP025
15	A	9.703	9.19	3.0	13.0	16.0	7.0	1xM2.5	13.0	13.0	9.0	15MP025
16	A	10.338	9.83	3.0	14.0	16.0	7.0	1xM2.5	13.0	14.0	9.0	16MP025
18	A	11.633	11.12	3.0	15.0	16.0	7.0	1xM2.5	13.0	15.0	9.0	18MP025
20	A	12.929	12.42	3.0	16.0	16.0	7.0	1xM2.5	13.0	16.0	9.0	20MP025
22	A	14.224	13.72	3.0	18.0	16.0	7.0	1xM2.5	13.0	18.0	9.0	22MP025
24	A	15.519	15.01	3.0	19.0	16.0	7.0	1xM2.5	13.0	19.0	9.0	24MP025
28	B	18.110	17.60	6.0	16.0	16.0	—	2xM2.5	3.0	—	9.0	28MP025
30	B	19.406	18.89	6.0	17.5	16.0	—	2xM2.5	3.0	—	9.0	30MP025
32	B	20.701	20.19	6.0	18.5	16.0	—	2xM2.5	3.0	—	9.0	32MP025
36	B	23.292	22.78	6.0	19.0	16.0	—	2xM3.0	3.0	—	9.0	36MP025
40	B	25.883	25.37	6.0	19.0	16.0	—	2xM3.0	3.0	—	9.0	40MP025
42	B	27.178	26.67	6.0	19.0	16.0	—	2xM3.0	3.0	—	9.0	42MP025
48	B	31.039	30.53	6.0	19.0	16.0	—	2xM3.0	3.0	—	9.0	48MP025
60	B	38.811	38.30	6.0	19.0	16.0	—	2xM3.0	3.0	—	9.0	60MP025
72	B	46.558	46.05	6.0	19.0	16.0	—	2xM3.0	3.0	—	9.0	72MP025
80	B	51.740	51.23	6.0	19.0	16.0	—	2xM3.0	3.0	—	9.0	80MP025

Material

Aluminium Alloy BS4300/5:1973 FC1

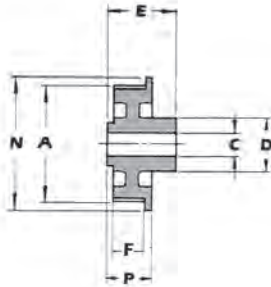
 Bore tolerance to BS 4500: 1968 (H8)
 General tolerance unless otherwise stated ± 0.25

All pulleys supplied with grub screws.

0.080" (MP) pitch
Moulded metric


type A

type B



type C

All dimensions in millimetres

Material

Pulley – Polycarbonate – Glass filled

 Bore tolerance +0.025
– NIL

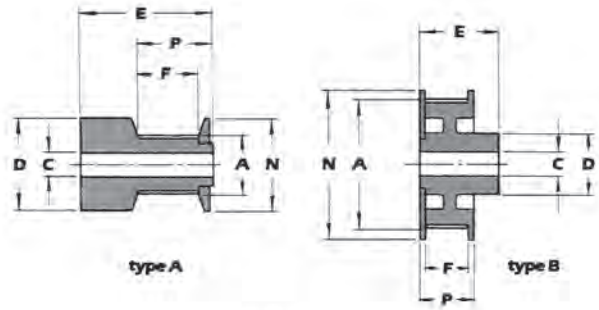
 General tolerance unless otherwise stated ± 0.25
 Working temperature range – 40°C to +80°C
 Please state catalogue number of required pulley when ordering.

No. Teeth	Type	Pitch dia	Outside dia A	Bore dia C	Boss dia D	Overall length E	Face-width F	Flange dia N	P	Catalogue No.
10	A	6.477	5.97	3.0	11.0	17.5	8.0	11.0	11.2	P10MP025M
11	A	7.112	6.60	3.0	11.0	17.5	8.0	12.0	11.2	P11MP025M
12	A	7.772	7.26	3.0	11.0	17.5	8.0	12.0	11.2	P12MP025M
14	A	9.068	8.56	4.0	11.0	17.5	8.0	13.0	11.2	P14MP025M
15	A	9.703	9.19	4.0	11.0	17.5	8.0	14.0	11.2	P15MP025M
16	A	10.338	9.83	4.0	11.0	17.5	8.0	15.0	11.2	P16MP025M
18	A	11.633	11.12	6.0	13.0	17.5	8.0	16.0	11.2	P18MP025M
20	A	12.929	12.42	6.0	13.0	17.5	8.0	17.0	11.2	P20MP025M
21	B	13.589	13.08	6.0	13.0	17.5	8.0	18.0	11.2	P21MP025M
22	B	14.224	13.72	6.0	13.0	17.5	8.0	19.0	11.2	P22MP025M
24	B	15.519	15.01	6.0	13.0	17.5	8.0	20.0	11.2	P24MP025M
28	B	18.110	17.60	8.0	17.0	17.5	8.0	22.0	11.2	P28MP025M
30	B	19.406	18.89	8.0	17.0	17.5	8.0	24.0	11.2	P30MP025M
32	B	20.701	20.19	8.0	17.0	17.5	8.0	25.0	11.2	P32MP025M
36	B	23.292	22.78	8.0	17.0	17.5	8.0	28.0	11.2	P36MP025M
40	C	25.883	25.37	8.0	17.0	17.5	8.0	30.0	11.2	P40MP025M
42	C	27.178	26.67	8.0	17.0	17.5	8.0	31.0	11.2	P42MP025M
44	C	28.448	27.94	8.0	17.0	17.5	8.0	33.0	11.2	P44MP025M
48	C	31.039	30.53	8.0	17.0	17.5	8.0	35.0	11.2	P48MP025M
60	C	38.811	38.30	8.0	17.0	17.5	8.0	43.0	11.2	P60MP025M
65	C	42.037	41.53	8.0	17.0	17.5	8.0	46.0	11.2	P65MP025M
72	C	46.558	46.05	8.0	17.0	17.5	8.0	51.0	11.2	P72MP025M
80	C	51.740	51.23	8.0	17.0	17.5	8.0	56.0	11.2	P80MP025M
90	C	58.217	57.71	8.0	17.0	17.5	8.0	63.0	11.2	P90MP025M
100	C	64.668	64.16	8.0	17.0	17.5	8.0	69.0	11.2	P100MP025M
110	C	71.145	70.63	8.0	17.0	17.5	8.0	75.0	11.2	P110MP025M
120	C	77.622	77.11	8.0	17.0	17.5	8.0	82.0	11.2	P120MP025M
130	C	84.074	83.57	8.0	17.0	17.5	8.0	88.0	11.2	P130MP025M

'Classical' Pulleys

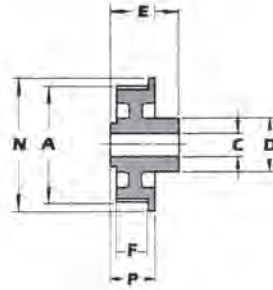
0.080" (MP) pitch

Moulded imperial



type A

type B



type C

All dimensions in inches

Material

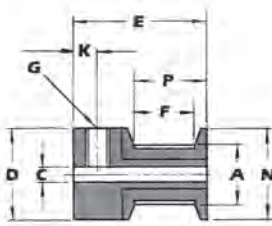
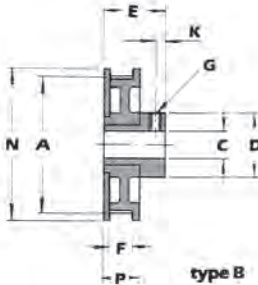
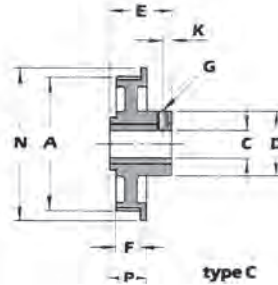
Pulley Polycarbonate – Glass filled

Bore tolerance + 0.001"
 – NIL

Working temperature range – 40°C
 to +80°C

Please state catalogue number of
 required pulley when ordering.

No. Teeth	Type	Pitch dia	Outside dia A	Bore dia C	Boss dia D	Overall length E	Face-width F	Flange dia N	P	Catalogue No.
10	A	0.255	0.235	0.093	0.437	0.688	0.312	0.42	0.437	P10MP025
11	A	0.280	0.260	0.093	0.437	0.688	0.312	0.45	0.437	P11MP025
12	A	0.306	0.286	0.093	0.437	0.688	0.312	0.47	0.437	P12MP025
14	A	0.357	0.337	0.125	0.437	0.688	0.312	0.53	0.437	P14MP025
15	A	0.382	0.362	0.125	0.437	0.688	0.312	0.55	0.437	P15MP025
16	A	0.407	0.387	0.125	0.437	0.688	0.312	0.58	0.437	P16MP025
18	A	0.458	0.438	0.188	0.500	0.688	0.312	0.63	0.437	P18MP025
20	A	0.509	0.489	0.188	0.500	0.688	0.312	0.68	0.437	P20MP025
21	B	0.535	0.515	0.188	0.500	0.688	0.312	0.70	0.437	P21MP025
22	B	0.560	0.540	0.188	0.500	0.688	0.312	0.73	0.437	P22MP025
24	B	0.611	0.591	0.188	0.500	0.688	0.312	0.78	0.437	P24MP025
28	B	0.713	0.693	0.250	0.688	0.688	0.312	0.88	0.437	P28MP025
30	B	0.764	0.744	0.250	0.688	0.688	0.312	0.93	0.437	P30MP025
32	B	0.815	0.795	0.250	0.688	0.688	0.312	0.98	0.437	P32MP025
36	B	0.917	0.897	0.250	0.688	0.688	0.312	1.09	0.437	P36MP025
40	C	1.019	0.999	0.250	0.688	0.688	0.312	1.19	0.437	P40MP025
42	C	1.070	1.050	0.250	0.688	0.688	0.312	1.24	0.437	P42MP025
44	C	1.120	1.100	0.250	0.688	0.688	0.312	1.29	0.437	P44MP025
48	C	1.222	1.202	0.250	0.688	0.688	0.312	1.39	0.437	P48MP025
60	C	1.528	1.508	0.250	0.688	0.688	0.312	1.70	0.437	P60MP025
65	C	1.655	1.635	0.312	0.688	0.688	0.312	1.82	0.437	P65MP025
72	C	1.833	1.813	0.312	0.688	0.688	0.312	2.00	0.437	P72MP025
80	C	2.037	2.017	0.312	0.688	0.688	0.312	2.21	0.437	P80MP025
90	C	2.292	2.272	0.312	0.688	0.688	0.312	2.46	0.437	P90MP025
100	C	2.546	2.526	0.312	0.688	0.688	0.312	2.71	0.437	P100MP025
110	C	2.801	2.781	0.312	0.688	0.688	0.312	2.97	0.437	P110MP025
120	C	3.056	3.036	0.312	0.688	0.688	0.312	3.22	0.437	P120MP025
130	C	3.310	3.290	0.312	0.688	0.688	0.312	3.48	0.437	P130MP025

0.080" (MP) pitch
Moulded with metric insert

type A

type B

type C

No. Teeth	Type	Pitch dia	Outside dia A	Bore dia C	Boss dia D	Overall length E	Face width F	G	K	Flange dia N	P	Catalogue No.
18	A	11.633	11.12	5.0	13.0	17.5	8.0	1xM3	3.0	16.0	11.0	P18MP025MI
20	A	12.929	12.42	5.0	13.0	17.5	8.0	1xM3	3.0	17.0	11.0	P20MP025MI
21	B	13.589	13.08	5.0	13.0	17.5	8.0	1xM3	3.0	18.0	11.0	P21MP025MI
22	B	14.224	13.72	5.0	13.0	17.5	8.0	1xM3	3.0	19.0	11.0	P22MP025MI
24	B	15.519	15.01	5.0	13.0	17.5	8.0	1xM3	3.0	20.0	11.0	P24MP025MI
28	B	18.110	17.60	5.0	13.0	17.5	8.0	1xM3	3.0	22.0	11.0	P28MP025MI
30	B	19.406	18.89	5.0	13.0	17.5	8.0	1xM3	3.0	24.0	11.0	P30MP025MI
32	B	20.701	20.19	5.0	13.0	17.5	8.0	1xM3	3.0	25.0	11.0	P32MP025MI
36	B	23.292	22.78	5.0	13.0	17.5	8.0	1xM3	3.0	28.0	11.0	P36MP025MI
40	C	25.883	25.37	5.0	17.0	17.5	8.0	1xM3	3.0	30.0	11.0	P40MP025MI
42	C	27.178	26.67	5.0	17.0	17.5	8.0	1xM3	3.0	31.0	11.0	P42MP025MI
44	C	28.448	27.94	5.0	17.0	17.5	8.0	1xM3	3.0	33.0	11.0	P44MP025MI
48	C	31.039	30.53	5.0	17.0	17.5	8.0	1xM3	3.0	35.0	11.0	P48MP025MI
60	C	38.811	38.30	6.0	17.0	17.5	8.0	1xM3	3.0	43.0	11.0	P60MP025MI
65	C	42.037	41.53	6.0	17.0	17.5	8.0	1xM3	3.0	46.0	11.0	P65MP025MI
72	C	46.558	46.05	6.0	17.0	17.5	8.0	1xM3	3.0	51.0	11.0	P72MP025MI
80	C	51.740	51.23	6.0	17.0	17.5	8.0	1xM3	3.0	56.0	11.0	P80MP025MI
90	C	58.217	57.71	6.0	17.0	17.5	8.0	1xM3	3.0	63.0	11.0	P90MP025MI
100	C	64.668	64.16	6.0	17.0	17.5	8.0	1xM3	3.0	69.0	11.0	P100MP025MI
110	C	71.145	70.63	6.0	17.0	17.5	8.0	1xM3	3.0	75.0	11.0	P110MP025MI
120	C	77.622	77.11	6.0	17.0	17.5	8.0	1xM3	3.0	82.0	11.0	P120MP025MI
130	C	84.074	83.57	6.0	17.0	17.5	8.0	1xM3	3.0	88.0	11.0	P130MP025MI

All dimensions in millimetres

Material

Hub Aluminium alloy 18 to 36 teeth

Brass 40-130 teeth

Pulley Polycarbonate - Glass filled

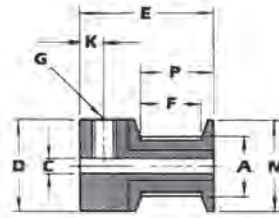
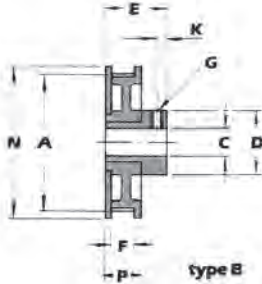
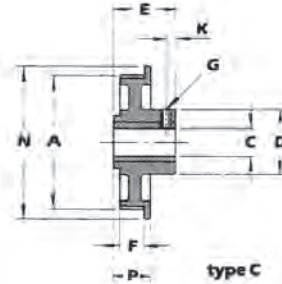
Bore tolerance + 0.025

- NIL

 General tolerance unless otherwise stated ± 0.25

 Working temperature range -40°C to $+80^{\circ}\text{C}$

All pulleys supplied with grub screw. These pulleys are not suitable for reboring to another diameter.

0.080" (MP) pitch
Moulded with imperial insert

type A

type B

type C

No. Teeth	Type	Pitch dia	Outside dia A	Bore dia C	Boss dia D	Overall length E	Face-width F	G	K	Flange dia N	P	Catalogue No.
18	A	0.458	0.438	0.188	0.500	0.688	0.312	1×6-32 UNC	0.125	0.630	0.437	P18MP025I
20	A	0.509	0.489	0.188	0.500	0.688	0.312	1×6-32 UNC	0.125	0.680	0.437	P20MP025I
21	B	0.535	0.515	0.188	0.500	0.688	0.312	1×6-32 UNC	0.125	0.700	0.437	P21MP025I
22	B	0.560	0.540	0.188	0.500	0.688	0.312	1×6-32 UNC	0.125	0.730	0.437	P22MP025I
24	B	0.611	0.591	0.188	0.500	0.688	0.312	1×6-32 UNC	0.125	0.780	0.437	P24MP025I
28	B	0.713	0.693	0.188	0.500	0.688	0.312	1×6-32 UNC	0.125	0.880	0.437	P28MP025I
30	B	0.764	0.744	0.188	0.500	0.688	0.312	1×6-32 UNC	0.125	0.930	0.437	P30MP025I
32	B	0.815	0.795	0.188	0.500	0.688	0.312	1×6-32 UNC	0.125	0.980	0.437	P32MP025I
36	B	0.917	0.897	0.188	0.500	0.688	0.312	1×6-32 UNC	0.125	1.090	0.437	P36MP025I
40	C	1.019	0.999	0.188	0.688	0.688	0.312	1×6-32 UNC	0.125	1.190	0.437	P40MP025I
42	C	1.070	1.050	0.188	0.688	0.688	0.312	1×6-32 UNC	0.125	1.240	0.437	P42MP025I
44	C	1.120	1.100	0.188	0.688	0.688	0.312	1×6-32 UNC	0.125	1.290	0.437	P44MP025I
48	C	1.222	1.202	0.188	0.688	0.688	0.312	1×6-32 UNC	0.125	1.390	0.437	P48MP025I
60	C	1.528	1.508	0.250	0.688	0.688	0.312	1×6-32 UNC	0.125	1.700	0.437	P60MP025I
65	C	1.655	1.635	0.250	0.688	0.688	0.312	1×6-32 UNC	0.125	1.820	0.437	P65MP025I
72	C	1.833	1.813	0.250	0.688	0.688	0.312	1×6-32 UNC	0.125	2.000	0.437	P72MP025I
80	C	2.037	2.017	0.250	0.688	0.688	0.312	1×6-32 UNC	0.125	2.210	0.437	P80MP025I
90	C	2.292	2.272	0.250	0.688	0.688	0.312	1×6-32 UNC	0.125	2.460	0.437	P90MP025I
100	C	2.546	2.526	0.250	0.688	0.688	0.312	1×6-32 UNC	0.125	2.710	0.437	P100MP025I
110	C	2.801	2.781	0.250	0.688	0.688	0.312	1×6-32 UNC	0.125	2.970	0.437	P110MP025I
120	C	3.056	3.036	0.250	0.688	0.688	0.312	1×6-32 UNC	0.125	3.220	0.437	P120MP025I
130	C	3.310	3.290	0.250	0.688	0.688	0.312	1×6-32 UNC	0.125	3.480	0.437	P130MP025I

All dimensions in inches

Material

 Hub Aluminium alloy 18 to 36 teeth
 Brass 40-130 teeth

Pulley Polycarbonate - Glass filled

Bore tolerance +0.001"

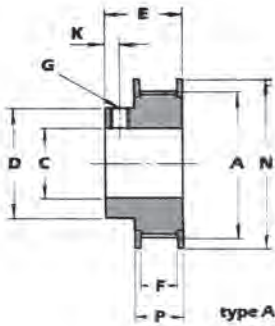
-NIL

Working temperature range - 40°C to +80°C

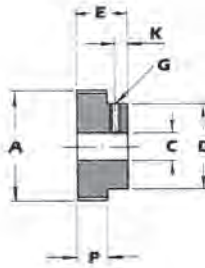
All pulleys supplied with grub screw. These pulleys are not suitable for re-boring to another diameter. Please state catalogue number of required pulley when ordering.

1/5" (XL) pitch

Aluminium alloy



type A



type B

All dimensions in inches

Material

Aluminium Alloy:

10 to 40 teeth BS4300/5:1973 FC1

42 to 72 teeth BS1470:1987 2014A

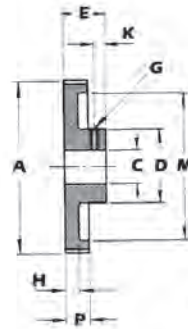
Bore tolerance to BS 1916: 1953

Pt. 1 (H8)

General tolerance unless otherwise stated $\pm 0.010"$

Tooth dimensions to BS 4548: 1970

All pulleys supplied with grub screws.



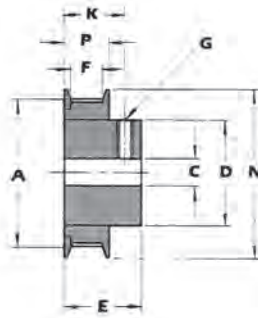
type C

No. Teeth	Type	Pitch dia	Outside dia A	Bore dia C	Boss dia D	Overall length E	Face-width F	G	H	K	M	Flange dia N	P	Catalogue No.
10	A	0.637	0.617	0.187	0.437	0.875	0.406	1xM3	—	0.187	—	0.875	0.531	10XL037
12	A	0.764	0.744	0.187	0.500	0.875	0.406	1xM3	—	0.187	—	1.000	0.531	12XL037
14	A	0.891	0.871	0.187	0.562	0.875	0.406	1xM3	—	0.187	—	1.125	0.531	14XL037
15	A	0.955	0.935	0.250	0.625	0.875	0.406	2xM3	—	0.187	—	1.187	0.531	15XL037
16	A	1.018	0.999	0.250	0.687	0.875	0.406	2xM3	—	0.187	—	1.250	0.531	16XL037
18	A	1.146	1.126	0.312	0.812	0.875	0.406	2xM3	—	0.187	—	1.375	0.531	18XL037
20	A	1.273	1.253	0.312	0.937	0.875	0.406	2xM3	—	0.187	—	1.500	0.531	20XL037
21	A	1.337	1.317	0.312	1.000	0.875	0.406	2xM3	—	0.187	—	1.562	0.531	21XL037
22	A	1.400	1.381	0.375	1.000	0.875	0.406	2xM5	—	0.187	—	1.625	0.531	22XL037
24	A	1.528	1.508	0.375	1.125	0.875	0.406	2xM5	—	0.187	—	1.750	0.531	24XL037
26	A	1.655	1.635	0.375	1.187	0.875	0.406	2xM5	—	0.187	—	1.875	0.531	26XL037
28	A	1.783	1.763	0.375	1.250	0.875	0.406	2xM5	—	0.187	—	2.000	0.531	28XL037
30	A	1.910	1.890	0.375	1.375	0.875	0.406	2xM5	—	0.187	—	2.125	0.531	30XL037
32	B	2.037	2.017	0.375	1.500	0.937	—	2xM5	—	0.250	—	—	0.562	32XL037
36	B	2.292	2.272	0.375	1.500	0.937	—	2xM5	—	0.250	—	—	0.562	36XL037
40	B	2.546	2.526	0.375	1.500	0.937	—	2xM5	—	0.250	—	—	0.562	40XL037
42	C	2.674	2.654	0.375	1.500	0.937	—	2xM5	0.312	0.250	2.154	—	0.562	42XL037
44	C	2.801	2.781	0.375	1.500	0.937	—	2xM5	0.312	0.250	2.281	—	0.562	44XL037
48	C	3.056	3.036	0.375	1.500	0.937	—	2xM5	0.312	0.250	2.536	—	0.562	48XL037
60	C	3.820	3.800	0.500	1.625	1.000	—	2xM5	0.312	0.250	3.175	—	0.562	60XL037
72	C	4.584	4.564	0.500	1.625	1.000	—	2xM5	0.312	0.250	3.937	—	0.562	72XL037

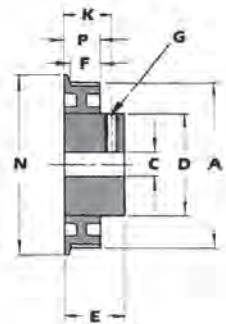
'Classical' Pulleys

1/5" (XL) pitch

Moulded with metric insert



type A



type B

No. Teeth	Type	Pitch dia	Outside dia A	Bore dia C	Boss dia D	Overall length E	Face-width F	G	K	Flange dia N	P	Catalogue No.
10	A	16.17	15.67	4.00	11.10	20.98	10.31	1xM3	17.15	22.02	13.49	P10XL037M
12	A	19.40	18.90	4.00	11.10	20.98	10.31	1xM3	17.15	25.25	13.49	P12XL037M
14	A	22.64	22.12	4.00	11.10	20.98	10.31	1xM3	17.15	28.47	13.49	P14XL037M
15	A	24.26	23.75	5.00	17.45	20.98	10.31	1xM4	17.15	30.10	13.49	P15XL037M
16	A	25.87	25.37	5.00	17.45	20.98	10.31	1xM4	17.15	31.72	13.49	P16XL037M
18	A	29.11	28.60	7.00	20.62	20.98	10.31	2xM4	17.15	34.95	13.49	P18XL037M
20	A	32.34	31.83	7.00	20.62	20.98	10.31	2xM4	17.15	38.18	13.49	P20XL037M
21	A	33.96	33.45	7.00	22.23	23.01	10.31	2xM5	18.24	39.68	13.49	P21XL037M
22	A	35.57	35.08	7.00	22.23	23.01	10.31	2xM5	18.24	41.43	13.49	P22XL037M
24	A	38.81	38.30	7.00	25.40	23.01	10.31	2xM5	18.24	44.65	13.49	P24XL037M
26	A	42.04	41.54	7.00	25.40	23.01	11.13	2xM5	18.24	47.75	14.28	P26XL037M
28	A	45.28	44.78	7.00	30.99	23.01	11.13	2xM5	18.24	51.13	14.28	P28XL037M
30	A	48.51	48.00	7.00	39.67	23.80	11.13	2xM5	18.24	54.36	14.28	P30XL037M
32	B	51.74	51.23	7.00	25.40	23.01	12.70	2xM5	18.24	57.58	14.28	P32XL037M
36	B	58.21	57.71	10.00	39.67	23.80	12.70	2xM5	19.05	64.06	14.28	P36XL037M
40	B	64.68	64.16	10.00	39.67	23.80	12.70	2xM5	19.05	70.51	14.28	P40XL037M
42	B	67.91	67.41	10.00	39.67	23.80	12.70	2xM5	19.05	73.74	14.28	P42XL037M
44	B	71.15	70.64	10.00	39.67	23.80	12.70	2xM5	19.05	76.96	14.28	P44XL037M
48	B	77.62	77.11	10.00	39.67	23.80	12.70	2xM5	19.05	83.46	14.28	P48XL037M
60	B	97.02	96.52	10.00	39.67	23.80	12.70	2xM5	19.05	102.90	14.28	P60XL037M
72	B	116.43	115.90	10.00	39.67	23.80	12.70	2xM5	19.05	122.30	14.28	P72XL037M

All dimensions in millimetres

Material

Hub Aluminium Alloy BS4300/5:1973FCI

Pulley Nylon - Zytel 73 G25
 PA6 25% Glass filled

Bore tolerance to BS 4500: 1969 (H9)

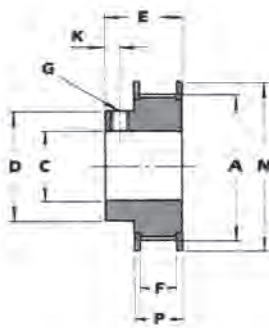
General tolerance unless otherwise stated ± 0.25

Tooth dimensions to BS 4548: 1970

Working temperature range -40°C to $+80^{\circ}\text{C}$

All pulleys supplied with grub screws.

$3/8"$ (L) pitch

Steel


No. Teeth	Pitch dia	Outside dia A	Bore dia C	Boss dia D	Overall length E	Face-width F	Flange dia			Catalogue No.	
							G	K	N		
To suit 1/2" wide belts											
10	1.194	1.164	0.375	0.812	1.250	0.562	1xM6	0.312	1.375	0.700	10L050
12	1.432	1.402	0.375	1.000	1.250	0.562	1xM6	0.312	1.625	0.700	12L050
14	1.671	1.641	0.375	1.250	1.250	0.562	1xM6	0.312	1.937	0.750	14L050
15	1.790	1.760	0.375	1.375	1.250	0.562	1xM6	0.312	2.062	0.750	15L050
16	1.910	1.880	0.375	1.500	1.250	0.562	1xM6	0.312	2.187	0.750	16L050
17	2.029	1.999	0.375	1.625	1.250	0.562	1xM6	0.312	2.250	0.750	17L050
18	2.148	2.119	0.375	1.625	1.250	0.562	1xM6	0.312	2.437	0.750	18L050
19	2.268	2.238	0.375	1.750	1.250	0.562	1xM6	0.312	2.625	0.750	19L050
20	2.387	2.357	0.375	1.750	1.250	0.562	1xM6	0.312	2.625	0.750	20L050
21	2.507	2.477	0.375	1.875	1.500	0.562	1xM6	0.312	2.750	0.750	21L050
22	2.626	2.596	0.375	2.000	1.500	0.562	1xM6	0.312	2.937	0.750	22L050
23	2.745	2.715	0.375	2.125	1.500	0.562	1xM6	0.312	3.125	0.750	23L050
24	2.865	2.835	0.375	2.125	1.500	0.562	1xM6	0.312	3.125	0.750	24L050

To suit 3/4" wide belts

10	1.194	1.164	0.375	0.812	1.500	0.812	1xM6	0.312	1.375	0.950	10L075
12	1.432	1.402	0.375	1.000	1.500	0.812	1xM6	0.312	1.625	0.950	12L075
14	1.671	1.641	0.375	1.250	1.500	0.812	1xM6	0.312	1.937	1.000	14L075
15	1.790	1.760	0.375	1.375	1.500	0.812	1xM6	0.312	2.062	1.000	15L075
16	1.910	1.880	0.375	1.500	1.500	0.812	1xM6	0.312	2.187	1.000	16L075
17	2.029	1.999	0.375	1.625	1.500	0.812	1xM6	0.312	2.250	1.000	17L075
18	2.148	2.119	0.375	1.625	1.500	0.812	1xM6	0.312	2.437	1.000	18L075
19	2.268	2.238	0.375	1.750	1.500	0.812	1xM6	0.312	2.625	1.000	19L075
20	2.387	2.357	0.375	1.750	1.500	0.812	1xM6	0.312	2.625	1.000	20L075
21	2.507	2.477	0.375	1.875	1.500	0.812	1xM6	0.312	2.750	1.000	21L075
22	2.626	2.596	0.375	2.000	1.500	0.812	1xM6	0.312	2.937	1.000	22L075
23	2.745	2.715	0.375	2.125	1.500	0.812	1xM6	0.312	3.125	1.000	23L075
24	2.865	2.835	0.375	2.125	1.500	0.812	1xM6	0.312	3.125	1.000	24L075

To suit 1" wide belts

10	1.194	1.164	0.375	0.812	1.875	1.062	1xM6	0.312	1.375	1.200	10L100
12	1.432	1.402	0.375	1.000	1.875	1.062	1xM6	0.312	1.625	1.200	12L100
14	1.671	1.641	0.375	1.250	1.875	1.062	1xM6	0.312	1.937	1.250	14L100
15	1.790	1.760	0.375	1.375	1.875	1.062	1xM6	0.312	2.062	1.250	15L100
16	1.910	1.880	0.375	1.500	1.875	1.062	1xM6	0.312	2.187	1.250	16L100
17	2.029	1.999	0.375	1.625	1.875	1.062	1xM6	0.312	2.250	1.250	17L100
18	2.148	2.119	0.375	1.625	1.875	1.062	1xM6	0.312	2.437	1.250	18L100
19	2.268	2.238	0.375	1.750	1.875	1.062	1xM6	0.312	2.625	1.250	19L100
20	2.387	2.357	0.375	1.750	1.875	1.062	1xM6	0.312	2.625	1.250	20L100
21	2.507	2.477	0.375	1.875	1.875	1.062	1xM6	0.312	2.750	1.250	21L100
22	2.626	2.596	0.375	2.000	1.875	1.062	1xM6	0.312	2.937	1.250	22L100
23	2.745	2.715	0.375	2.125	1.875	1.062	1xM6	0.312	3.125	1.250	23L100
24	2.865	2.835	0.375	2.125	1.875	1.062	1xM6	0.312	3.125	1.250	24L100

All dimensions in inches

Material

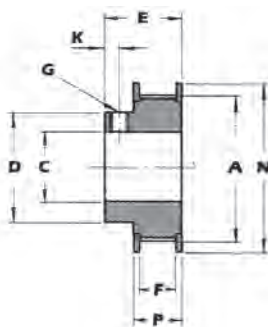
 Steel BS970 Pt.1 1991 080M15 (EN32)
 or BS970 Pt.3 1991 230M07 (EN1A)

 Bore tolerance to BS 1916: 1953 (H8)
 General tolerance unless otherwise stated $\pm 0.010"$
 Tooth dimensions to BS 4548: 1970
 All pulleys supplied with grub screws

'Classical' Pulleys

3/8" (L) pitch

Steel



No. Teeth	Pitch dia	Outside dia A	Bore dia C	Boss dia D	Overall length E	Face-width F	G	K	Flange dia N	P	Catalogue No.
-----------	-----------	---------------	------------	------------	------------------	--------------	---	---	--------------	---	---------------

To suit 1/2" wide belts

26	3.103	3.074	0.500	2.375	1.500	0.562	1xM6	0.312	3.375	0.750	26L050
28	3.342	3.312	0.500	2.500	1.500	0.562	1xM6	0.312	3.562	0.750	28L050
30	3.581	3.551	0.500	2.750	1.500	0.562	1xM6	0.312	3.875	0.750	30L050
32	3.820	3.790	0.500	3.000	1.500	0.562	1xM6	0.312	4.062	0.750	32L050
36	4.297	4.267	0.625	3.250	1.500	0.562	1xM6	0.312	4.500	0.750	36L050
40	4.775	4.745	0.625	3.625	1.500	0.562	1xM6	0.312	5.000	0.750	40L050
48	5.729	5.700	0.750	3.625	1.500	0.562	1xM6	0.312	5.937	0.750	48L050

To suit 3/4" wide belts

26	3.103	3.074	0.500	2.375	1.500	0.812	1xM6	0.312	3.375	1.000	26L075
28	3.342	3.312	0.500	2.500	1.500	0.812	1xM6	0.312	3.562	1.000	28L075
30	3.581	3.551	0.500	2.750	1.500	0.812	1xM6	0.312	3.875	1.000	30L075
32	3.820	3.790	0.500	3.000	1.500	0.812	1xM6	0.312	4.062	1.000	32L075
36	4.297	4.267	0.625	3.250	1.500	0.812	1xM6	0.312	4.500	1.000	36L075
40	4.775	4.745	0.625	3.625	1.500	0.812	1xM6	0.312	5.000	1.000	40L075
48	5.729	5.700	0.750	3.625	1.500	0.812	1xM6	0.312	5.937	1.000	48L075

To suit 1" wide belts

26	3.103	3.074	0.500	2.375	1.875	1.062	1xM6	0.312	3.375	1.250	26L100
28	3.342	3.312	0.500	2.500	1.875	1.062	1xM6	0.312	3.562	1.250	28L100
30	3.581	3.551	0.500	2.750	1.875	1.062	1xM6	0.312	3.875	1.250	30L100
32	3.820	3.790	0.500	3.000	1.875	1.062	1xM6	0.312	4.062	1.250	32L100
36	4.297	4.267	0.625	3.250	1.875	1.062	1xM6	0.312	4.500	1.250	36L100
40	4.775	4.745	0.625	3.625	1.875	1.062	1xM6	0.312	5.000	1.250	40L100
48	5.729	5.700	0.750	3.625	1.875	1.062	1xM6	0.312	5.937	1.250	48L100

All dimensions in inches

Material

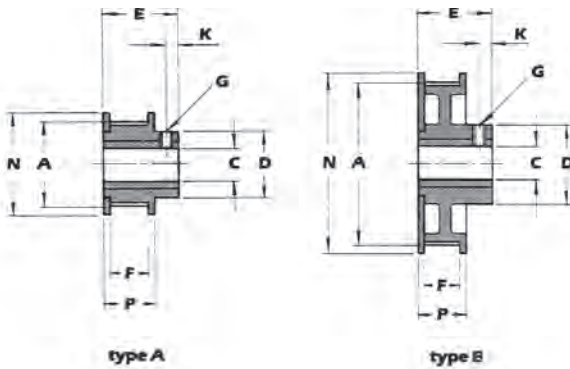
Steel BS970 Pt.1 1991 080M15 (EN32)
 or BS970 Pt.3 1991 230M07 (EN1A)

Bore tolerance to BS 1916: 1953 (H8)
 General tolerance unless otherwise stated ± 0.010 "

Tooth dimensions to BS 4548: 1970
 All pulleys supplied with grub screws.

3/8" (L) pitch

Moulded with imperial insert



No. Teeth	Type	Pitch dia	Outside dia A	Bore dia C	Boss dia D	Overall length E	Face-width F	Flange dia		Catalogue No.
								G	K	

To suit 1/2" wide belts

10	A	1.194	1.164	0.375	0.875	1.21	0.562	#10-32	0.250	1.44	0.712	P10L050
12	A	1.432	1.402	0.375	0.875	1.21	0.562	#10-32	0.250	1.69	0.712	P12L050
16	B	1.910	1.880	0.500	1.125	1.21	0.562	1/4-28	0.250	2.12	0.712	P16L050
18	B	2.148	2.119	0.500	1.125	1.21	0.562	1/4-28	0.250	2.37	0.712	P18L050
20	B	2.387	2.357	0.500	1.125	1.21	0.562	1/4-28	0.250	2.62	0.712	P20L050
24	B	2.865	2.835	0.500	1.125	1.21	0.562	1/4-28	0.250	3.12	0.712	P24L050
36	B	4.297	4.267	0.500	1.125	1.21	0.562	1/4-28	0.250	4.53	0.712	P36L050
40	B	4.775	4.744	0.500	1.125	1.21	0.562	1/4-28	0.250	5.00	0.712	P40L050

To suit 3/4" wide belts

10	A	1.194	1.164	0.375	0.875	1.46	0.812	#10-32	0.250	1.44	0.96	P10L075
12	A	1.432	1.402	0.375	0.875	1.46	0.812	#10-32	0.250	1.69	0.96	P12L075
16	B	1.910	1.880	0.500	1.125	1.46	0.812	1/4-28	0.250	2.12	0.96	P16L075
18	B	2.148	2.119	0.500	1.125	1.46	0.812	1/4-28	0.250	2.37	0.96	P18L075
20	B	2.387	2.357	0.500	1.125	1.46	0.812	1/4-28	0.250	2.62	0.96	P20L075
24	B	2.865	2.835	0.500	1.125	1.46	0.812	1/4-28	0.250	3.12	0.96	P24L075
36	B	4.297	4.267	0.500	1.125	1.46	0.812	1/4-28	0.250	4.53	0.96	P36L075
40	B	4.775	4.744	0.500	1.125	1.46	0.812	1/4-28	0.250	5.00	0.96	P40L075

All dimensions in inches

Material

Hub	Aluminium Alloy
Pulley	Polycarbonate - Glass filled

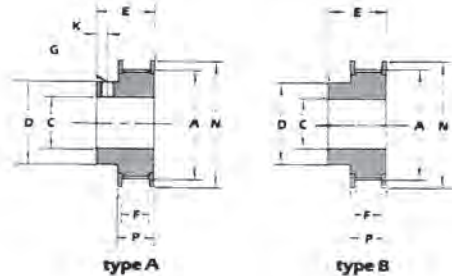
Bore tolerance + 0.001"

-NIL

 General tolerance unless otherwise stated $\pm 0.010"$

 Working temperature range -40°C to $+80^{\circ}\text{C}$

These pulleys are not suitable for reboring to another diameter.


type A
type B

 All dimensions
in inches

No. Teeth	Type	Pitch dia	Outside dia A	Bore dia C	Boss dia D	Overall length E	Face-width F	G	K	Flange dia N	P	Catalogue No.
To suit 1" wide belts												
16	A	2.546	2.492	0.500	1.875	1.750	1.062	1xM6	0.250	2.750	1.250	16H100
18	A	2.865	2.811	0.500	2.250	1.750	1.062	1xM6	0.250	3.125	1.250	18H100
20	A	3.183	3.129	0.625	2.562	1.750	1.062	1xM6	0.250	3.375	1.250	20H100
22	A	3.501	3.447	0.625	2.625	1.750	1.062	1xM6	0.250	3.750	1.250	22H100
24	A	3.820	3.766	0.625	2.625	1.750	1.062	1xM6	0.250	4.062	1.250	24H100
26	A	4.138	4.084	0.750	2.625	1.750	1.062	1xM6	0.250	4.375	1.250	26H100
28	A	4.456	4.402	0.750	3.625	1.750	1.062	1xM6	0.250	4.687	1.250	28H100
30	A	4.775	4.721	0.750	3.625	1.750	1.062	1xM6	0.250	5.000	1.250	30H100
32	B	5.093	5.039	1.000	3.625	1.750	1.062	—	—	5.187	1.250	32H100
36	B	5.729	5.676	1.000	3.625	1.750	1.062	—	—	5.937	1.250	36H100
40	B	6.366	6.312	1.500	5.000	2.250	1.062	—	—	6.625	1.250	40H100
48	B	7.639	7.585	1.500	5.000	2.250	1.062	—	—	7.875	1.250	48H100
To suit 1 1/2" wide belts												
16	A	2.546	2.492	0.500	1.875	2.375	1.687	1xM6	0.250	2.750	1.875	16H150
18	A	2.865	2.811	0.500	2.250	2.375	1.687	1xM6	0.250	3.125	1.875	18H150
20	A	3.183	3.129	0.625	2.562	2.375	1.687	1xM6	0.250	3.375	1.875	20H150
22	A	3.501	3.447	0.625	2.625	2.375	1.687	1xM6	0.250	3.750	1.875	22H150
24	A	3.820	3.766	0.625	2.625	2.375	1.687	1xM6	0.250	4.062	1.875	24H150
26	A	4.138	4.084	0.750	2.625	2.375	1.687	1xM6	0.250	4.375	1.875	26H150
28	A	4.456	4.402	0.750	3.625	2.375	1.687	1xM6	0.250	4.687	1.875	28H150
30	A	4.775	4.721	0.750	3.625	2.375	1.687	1xM6	0.250	5.000	1.875	30H150
To suit 2" wide belts												
16	A	2.546	2.492	0.500	1.875	2.812	2.125	1xM6	0.250	2.750	2.312	16H200
18	A	2.865	2.811	0.500	2.250	2.812	2.125	1xM6	0.250	3.125	2.312	18H200
20	A	3.183	3.129	0.625	2.562	2.812	2.125	1xM6	0.250	3.375	2.312	20H200
22	A	3.501	3.447	0.625	2.625	2.812	2.125	1xM6	0.250	3.750	2.312	22H200
24	A	3.820	3.766	0.625	2.625	2.812	2.125	1xM6	0.250	4.062	2.312	24H200
26	A	4.138	4.084	0.750	2.625	2.812	2.125	1xM6	0.250	4.375	2.312	26H200
28	A	4.456	4.402	0.750	3.625	2.812	2.125	1xM6	0.250	4.687	2.312	28H200
30	A	4.775	4.721	0.750	3.625	2.812	2.125	1xM6	0.250	5.000	2.312	30H200
32	B	5.093	5.039	1.000	3.625	2.812	2.125	—	—	5.187	2.312	32H200
36	B	5.729	5.676	1.000	3.625	2.812	2.125	—	—	5.937	2.312	36H200
40	B	6.366	6.312	1.500	5.000	3.312	2.125	—	—	6.625	2.312	40H200
48	B	7.639	7.585	1.500	5.000	3.312	2.125	—	—	7.875	2.312	48H200
To suit 3" wide belts												
16	A	2.546	2.492	0.500	1.875	3.875	3.187	1xM6	0.250	2.750	3.375	16H300
18	A	2.865	2.811	0.500	2.250	3.875	3.187	1xM6	0.250	3.125	3.375	18H300
20	A	3.183	3.129	0.625	2.562	3.875	3.187	1xM6	0.250	3.375	3.375	20H300
22	A	3.501	3.447	0.625	2.625	3.875	3.187	1xM6	0.250	3.750	3.375	22H300
24	A	3.820	3.766	0.625	2.625	3.875	3.187	1xM6	0.250	4.062	3.375	24H300
26	A	4.138	4.084	0.750	2.625	3.875	3.187	1xM6	0.250	4.375	3.375	26H300
28	A	4.456	4.402	0.750	3.625	3.875	3.187	1xM6	0.250	4.687	3.375	28H300
30	A	4.775	4.721	0.750	3.625	3.875	3.187	1xM6	0.250	5.000	3.375	30H300
32	B	5.093	5.039	1.000	3.625	3.875	3.187	—	—	5.187	3.375	32H300
36	B	5.729	5.676	1.000	3.625	3.875	3.187	—	—	5.937	3.375	36H300
40	B	6.366	6.312	1.500	5.000	4.375	3.187	—	—	6.625	3.375	40H300
48	B	7.639	7.585	1.500	5.000	4.375	3.187	—	—	7.875	3.375	48H300

Material

 Steel BS970 Pt.1 1991 080M15 (EN32)
or BS970 Pt.3 1991 230M07 (EN1A)

Bore tolerance to BS 1916: 1953 (H8)

 General tolerance unless otherwise stated $\pm 0.010"$

Tooth dimensions to BS 4548: 1970

All type A pulleys supplied with grub screws.