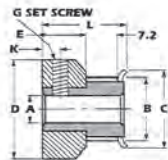
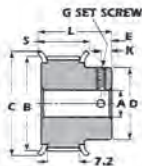
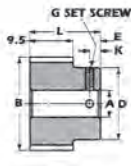


2mm pitch, 6mm belt
Aluminium parallel bore

Fig. 1F

Fig. 6F

Fig. 6

No. teeth	Type	Pitch dia.	Pilot Bore A	Outside dia. B	Flange dia. C	Hub dia. D	Boss proj E	Overall length L	G	K	Catalogue Ref
12	1F	7.6	3	7.1	12.2	12.2	6	14.3	M2	2.8	12-2MR-06
13	1F	8.3	3	7.8	12.8	12.8	6	14.3	M2	2.8	13-2MR-06
14	1F	8.9	3	8.4	13.5	13.5	6	14.3	M2	2.8	14-2MR-06
15	1F	9.6	4	9	14.1	14.1	6	14.3	M2.5	2.8	15-2MR-06
16	1F	10.2	4	9.7	14.7	14.7	6	14.3	M2.5	2.8	16-2MR-06
17	6F	10.8	4	10.3	16.1	7.9	6	15.9	M2.5	2.8	17-2MR-06
18	6F	11.5	4	11	16.1	9.2	6	15.9	M2.5	2.8	18-2MR-06
19	6F	12.3	4	11.6	16.1	9.9	6	15.9	M2.5	2.8	19-2MR-06
20	6F	12.7	4	12.2	17.4	9.9	6	15.9	M2.5	2.8	20-2MR-06
21	6F	13.4	4	12.9	18	9.9	6	15.9	M2.5	2.8	21-2MR-06
22	6F	14.0	4	13.5	18.8	9.9	6	15.9	M2.5	2.8	22-2MR-06
24	6F	15.3	6	14.8	20.1	11.2	7.5	17.4	M3	4	24-2MR-06
25	6F	15.9	6	15.4	20.7	11.9	7.5	17.4	M3	4	25-2MR-06
26	6F	16.6	6	16.1	21.3	12.5	7.5	17.4	M3	4	26-2MR-06
28	6F	17.8	6	17.3	22.7	12.5	7.5	17.4	M3	4	28-2MR-06
30	6F	19.1	6	18.6	24	13.9	7.5	17.4	M3	4	30-2MR-06
32	6F	20.4	6	19.9	25.4	15.2	7.5	17.4	M3	4	32-2MR-06
36	6F	23.0	6	22.4	28.1	17.2	7.5	17.4	M3	4	36-2MR-06
40	6F	25.5	6	25	30.7	19.2	8	18.3	M3	4	40-2MR-06
42	6F	26.7	6	26.2	32	20.5	8	18.3	M3	4	42-2MR-06
44	6F	28.0	6	27.5	33.4	21.8	8	18.3	M3	4	44-2MR-06
45	6F	28.6	6	28.1	34	22.9	8	18.3	M3	4	45-2MR-06
48	6F	30.6	6	30	36.1	23.8	8	18.3	M3	4	48-2MR-06
50	6F	31.8	6	31.3	37.3	23.8	8	18.3	M3	4	50-2MR-06
56	6F	35.7	6	35.2	40	26.2	8	18.3	M3	4	56-2MR-06
60	6F	38.2	6	37.7	43.9	31	8	18.3	M3	4	60-2MR-06
62	6	39.5	6	39	-	29.2	9.5	19.1	M3	4	62-2MR-06
68	6	43.3	6	42.8	-	30.4	9.5	19.1	M3	5	68-2MR-06
72	6	45.9	6	45.3	-	30.4	9.5	19.1	M3	5	72-2MR-06
74	6	47.1	8	46.6	-	30.9	9.5	19.1	M4	5	74-2MR-06
80	6	51.0	8	50.4	-	38.1	9.5	19.1	M4	5	80-2MR-06
90	6	57.3	8	56.8	-	38.1	9.5	19.1	M4	5	90-2MR-06
100	6	63.7	8	63.2	-	38.1	9.5	19.1	M4	5	100-2MR-06
120	6	76.4	10	75.9	-	38.1	9.5	19.1	M5	5	120-2MR-06

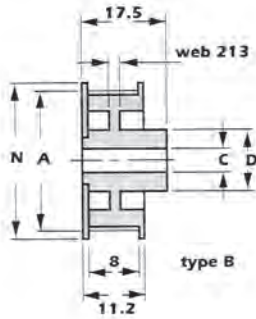
Material
 Aluminium

Bore tolerance -0 / $+0.025$ mm

12T to 16T pulley 1 set screw
 large have Z at 90°

2mm pitch - 6mm belt

Moulded metric



No. teeth	Pitch dia.	Outside dia A	Bore C	Flange dia N	Boss dia D	Catalogue Ref
12	7.6	7.1	4	12	11	P12-2MR-06M
13	8.3	7.8	4	13	11	P13-2MR-06M
14	8.9	8.4	4	13	11	P14-2MR-06M
15	9.6	9.1	4	14	11	P15-2MR-06M
16	10.2	9.7	4	15	11	P16-2MR-06M
18	11.5	11	6	16	13	P18-2MR-06M
20	12.7	12.2	6	17	13	P20-2MR-06M
21	13.4	12.9	6	18	13	P21-2MR-06M
22	14	13.5	6	19	13	P22-2MR-06M
24	15.3	14.8	6	20	13	P24-2MR-06M
28	17.8	17.3	8	22	17.5	P28-2MR-06M
30	19.1	18.6	8	24	17.5	P30-2MR-06M
32	20.4	19.9	8	25	17.5	P32-2MR-06M
36	23	22.5	8	28	17.5	P36-2MR-06M
40	25.5	25	8	30	17.5	P40-2MR-06M
42	26.7	26.2	8	31	17.5	P42-2MR-06M
44	28	27.5	8	33	17.5	P44-2MR-06M
45	30.6	30.1	8	35	17.5	P45-2MR-06M
60	38.2	37.7	8	43	17.5	P60-2MR-06M
65	41.4	40.9	8	46	17.5	P65-2MR-06M
72	45.8	45.3	8	51	17.5	P72-2MR-06M
80	51	50.5	8	56	17.5	P80-2MR-06M
90	57.3	56.8	8	63	17.5	P90-2MR-06M
100	63.7	63.2	8	69	17.5	P100-2MR-06M
110	70	69.5	8	75	17.5	P110-2MR-06M
120	76.4	75.9	8	82	17.5	P120-2MR-06M
130	82.8	82.3	8	88	17.5	P130-2MR-06M

NO WEB 12T - 40T incl

Material

Moulded polycarbonate, glass filled

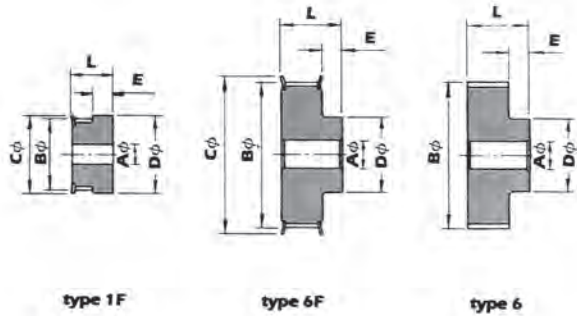
Bore tolerance $+0$
 $+0.025$ mm

Working temperature range
 -40°C to $+80^{\circ}\text{C}$

General tolerance unless stated
 ± 0.25 mm

3mm pitch, 9mm belt

Parallel bore



Preferred sizes are shown in **BOLD**

No. teeth	Type	Mati.	Flange	Pitch dia.	Pilot bore			Hub dia. D	Max bore dia. * E	Overall length L	Catalogue No.	
					A	B	C					
10	1F		ALUMINIUM WITH FLANGES	9.55	—	8.79	13	13	7.3	4	17.5	10-3MR-09
12	1F			11.46	—	10.70	15	15	7.3	6	17.5	12-3MR-09
14	1F			13.37	—	12.61	16	16	7.3	7	17.5	14-3MR-09
15	1F			14.32	—	13.56	17.5	17.5	7.3	8	17.5	15-3MR-09
16	6F			15.28	4	14.52	18	10	7.8	6	20.6	16-3MR-09
18	6F			17.19	6	16.43	19.5	11	7.8	6	20.6	18-3MR-09
20	6F			19.10	6	18.34	23	13	7.8	8	20.6	20-3MR-09
21	6F			20.50	6	19.29	25	14	7.8	8	20.6	21-3MR-09
22	6F			21.10	6	20.25	25	14	7.8	8	20.6	22-3MR-09
24	6F			22.92	6	22.16	25	14	7.8	8	20.6	24-3MR-09
26	6F			24.83	6	24.70	28	16	7.8	9	20.6	26-3MR-09
28	6F			26.74	6	25.98	32	18	7.8	11	20.6	28-3MR-09
30	6F			28.65	6	27.89	32	20	7.8	12	20.6	30-3MR-09
32	6F			30.56	6	29.80	36	22	7.8	14	20.6	32-3MR-09
36	6F			34.38	6	33.62	38	26	8.8	17	22.2	36-3MR-09
40	6F			38.20	6	37.44	42	28	8.8	19	22.2	40-3MR-09
44	6F			42.20	6	41.26	48	33	8.8	23	22.2	44-3MR-09
48	6			45.84	8	45.80	—	33	8.8	23	22.2	48-3MR-09
60	6			57.30	8	56.54	—	33	8.8	23	22.2	60-3MR-09
72	6			68.75	8	67.99	—	33	8.8	23	22.2	72-3MR-09

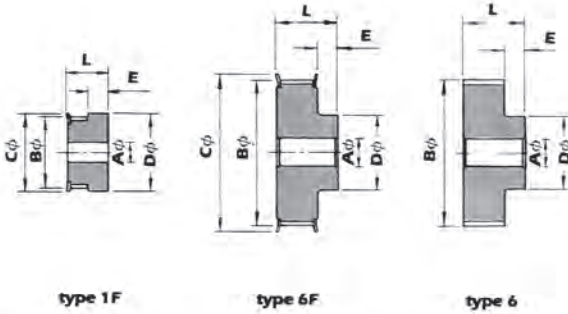
All dimensions are in millimetres.
Bore tolerances to H8 limits.
*This is the maximum allowable bore diameter.

We recommend the use of Trantorque bushes as an alternative method of holding pulleys with parallel bores on parallel shafts – full details available on request.

These pulleys are also available for use with 15mm wide belts.

3mm pitch, 15mm belt

Parallel bore



Preferred sizes are shown in BOLD

No. teeth	Type	Mati.	Flange	Pitch dia.	Pilot bore A	Outside dia. B	Flange dia. C	Hub dia. D	Max bore dia.		Overall length L	Catalogue No.		
									*	*				
10	1F		ALUMINIUM	WITH FLANGES	9.55	-	8.79	13	13	9	4	26	10-3MR-15	
12	1F				11.46	-	10.70	15	15	15	9	6	26	12-3MR-15
14	1F				13.37	-	12.61	16	16	16	9	7	26	14-3MR-15
15	1F				14.32	-	13.56	17.5	17.5	17.5	9	8	26	15-3MR-15
16	6F				15.28	4	14.52	18	10	6.5	6	26	16-3MR-15	
18	6F				17.19	6	16.43	19.5	11	6.5	6	26	18-3MR-15	
20	6F				19.10	6	18.34	23	13	6.5	8	26	20-3MR-15	
21	6F				20.50	6	19.29	25	14	6.5	8	26	21-3MR-15	
22	6F				21.10	6	20.25	25	14	6.5	8	26	22-3MR-15	
24	6F				22.92	6	22.16	25	14	6.5	8	26	24-3MR-15	
26	6F				24.83	6	24.70	28	16	6.5	9	26	26-3MR-15	
28	6F				26.74	6	25.98	32	18	6.5	11	26	28-3MR-15	
30	6F				28.65	6	27.89	32	20	6.5	12	26	30-3MR-15	
32	6F				30.56	6	29.80	36	22	6.5	14	26	32-3MR-15	
36	6F				34.38	6	33.62	38	26	10	17	30	36-3MR-15	
40	6F				38.20	6	37.44	42	28	10	19	30	40-3MR-15	
44	6F		42.20	6	41.26	48	33	10	23	30	44-3MR-15			
48	6		45.84	8	45.80	-	33	10	23	30	48-3MR-15			
60	6		57.30	8	56.54	-	33	10	23	30	60-3MR-15			
72	6		68.75	8	67.99	-	33	10	23	30	72-3MR-15			

All dimensions are in millimetres.

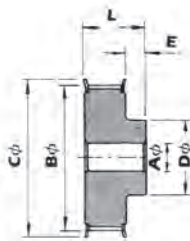
Bore tolerances to H8 limits

*This is the maximum allowable bore diameter.

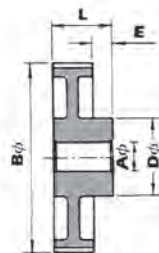
We recommend the use of Trantorque bushes as an alternative method of holding pulleys with parallel bores on parallel shafts – full details available on request.

5mm pitch, 9mm belt

Parallel bore



type 6F



type 6W

Preferred sizes are shown in **BOLD**

No. teeth	Type	Mati.	Flange	Pitch dia.	Pilot bore A	Outside dia. B	Flange dia. C	Hub dia. D	E	Max bore dia. *	Overall length L	Catalogue No.
12	6F	STEEL	WITH FLANGES	19.10	4	17.96	23	13	5.5	8	20	12-5MR-09
14	6F			22.28	6	21.14	25	14	5.5	8	20	14-5MR-09
15	6F			23.87	6	22.73	28	16	5.5	9	20	15-5MR-09
16	6F			25.46	6	24.32	28	16.5	5.5	11	20	16-5MR-09
18	6F			28.65	6	27.51	32	20	5.5	12	20	18-5MR-09
20	6F			31.83	6	30.69	36	23	8	15	22.5	20-5MR-09
21	6F			33.42	6	32.28	38	24	8	15	22.5	21-5MR-09
22	6F			35.10	6	33.87	38	25.5	8	16	22.5	22-5MR-09
24	6F			38.20	6	37.06	42	27	8	18	22.5	24-5MR-09
26	6F			41.38	6	40.24	44	30	8	21	22.5	26-5MR-09
28	6F			44.56	6	43.42	48	30.5	8	21	22.5	28-5MR-09
30	6F			47.75	6	46.60	51	35	8	24	22.5	30-5MR-09
32	6F			50.93	8	49.79	54	38	8	26	22.5	32-5MR-09
36	6F			57.30	8	56.16	60	38	8	26	22.5	36-5MR-09
40	6F	63.66	8	62.52	71	38	8	26	22.5	40-5MR-09		
44	6W	ALUMINIUM	WITHOUT FLANGES	70.03	8	68.89	-	38	11	26	25.5	44-5MR-09
48	6W			76.39	8	75.25	-	45	11	26	25.5	48-5MR-09
60	6W			95.49	8	94.35	-	45	11	31	25.5	60-5MR-09
72	6W			114.59	8	113.45	-	45	11	31	25.5	72-5MR-09

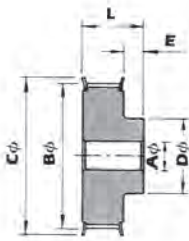
All dimensions are in millimetres.
Bore tolerances to H8 limits
*This is the maximum allowable bore diameter.

We recommend the use of Trantorque bushes as an alternative method of holding pulleys with

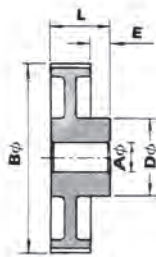
parallel bores on parallel shafts – full details available on request.

5mm pitch, 15mm belt

Parallel bore



type 6F



type 6W

Preferred sizes are shown in BOLD

No. teeth	Type	Mati.	Flange	Pitch dia.	Pilot bore A	Outside dia. B	Flange dia. C	Hub dia. D	E	Max bore dia. *	Overall length L	Catalogue No.
12	6F		STEEL WITH FLANGES	19.10	4	17.96	23	13	5.5	8	26	12-5MR-15
14	6F			22.28	6	21.14	25	14	5.5	8	26	14-5MR-15
15	6F			23.87	6	22.73	28	16	5.5	9	26	15-5MR-15
16	6F			25.46	6	24.32	28	16.5	5.5	11	26	16-5MR-15
18	6F			28.65	6	27.51	32	20	5.5	12	26	18-5MR-15
20	6F			31.83	6	30.69	36	23	5.5	15	26	20-5MR-15
21	6F			33.42	6	32.28	38	24	5.5	15	26	21-5MR-15
22	6F			35.10	6	33.87	38	25.5	5.5	16	26	22-5MR-15
24	6F			38.20	6	37.06	42	27	7.5	18	28	24-5MR-15
26	6F			41.38	6	40.24	44	30	7.5	21	28	26-5MR-15
28	6F			44.56	6	43.42	48	30.5	7.5	21	28	28-5MR-15
30	6F			47.75	6	46.60	51	35	7.5	24	28	30-5MR-15
32	6F			50.93	8	49.79	54	38	7.5	26	28	32-5MR-15
36	6F			57.30	8	56.16	60	38	7.5	26	28	36-5MR-15
40	6F			63.66	8	62.52	71	38	7.5	26	28	40-5MR-15
44	6W	ALUMINIUM WITHOUT FLANGES		70.03	8	68.89	-	38	9.5	26	30	44-5MR-15
48	6W		76.39	8	75.25	-	45	9.5	26	30	48-5MR-15	
60	6W		95.49	8	94.35	-	45	9.5	31	30	60-5MR-15	
72	6W		114.59	8	113.45	-	45	9.5	31	30	72-5MR-15	

All dimensions are in millimetres.

Bore tolerances to H8 limits

*This is the maximum allowable bore diameter.

We recommend the use of Trantorque bushes as an alternative method of holding pulleys with parallel bores on parallel shafts – full details available on request.