

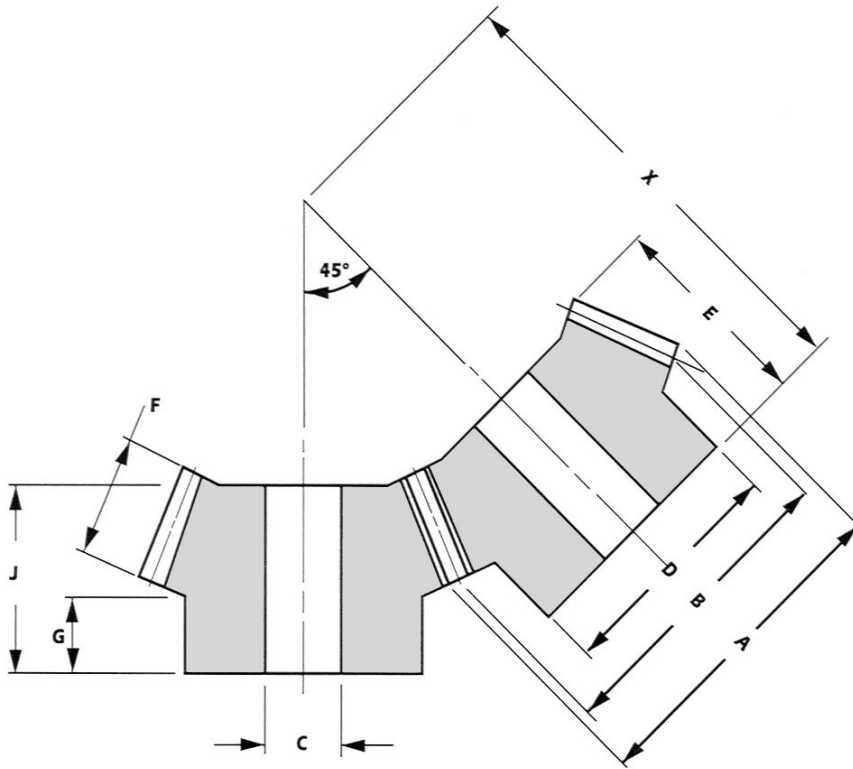
# DAVALL GEARS Bevel Gears

Angled shaft 45°

Steel 1.5 to 3.0 MODULE

**RATIO 1:1**

GEARS



Pitch MOD	No. of Teeth	Outside Dia. A	Pitch Dia. B	Bore Dia. C (H7)	Boss Dia. D	Overall Length E	Face Width F	Boss Proj G	Bore Length J	Mounting Length X	Catalogue No.
1.5	20	32.77	30	8	25	19.33	11	7.75	18	45	<b>AMB15-20-S-45</b>
2.0	20	43.69	40	10	30	26.08	15	9.65	24	60	<b>AMB20-20-S-45</b>
2.5	20	54.62	50	12	40	31.92	18	12.58	30	75	<b>AMB25-20-S-45</b>
3.0	20	65.54	60	14	50	38.66	22	15.51	36	90	<b>AMB30-20-S-45</b>

### Material

Steel BS970 Pt. 3 1991 080M46

or equivalent

All dimensions in millimetres.

Pressure angle 20°.

These bevel gears are cut to the Gleason System.

Bore tolerances to BS. 4500: 1969, H7.

General tolerances unless otherwise stated  $\pm 0.25$ .

Angular accuracy between shafts  $\pm 0^\circ-5'$ .

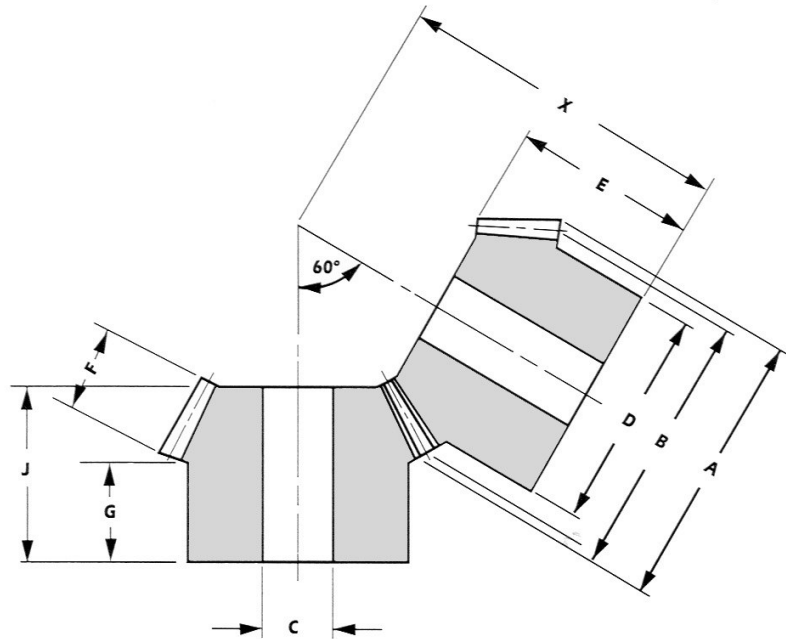
Shaft axes should intersect within  $\pm 0.025$ .

Mounting distance tolerance

(Dimn. x)  $\begin{matrix} + \text{NIL} \\ - 0.05 \end{matrix}$

These gears are not hardened.

These gears cannot be run with any other series.

**DAVALL**  
GEARS**Bevel Gears****Angled shaft 60°****Steel 1.5 to 3.0 MODULE****GEARS****RATIO 1:1**

Pitch MOD	No. of Teeth	Outside Dia. A	Pitch Dia. B	Bore Dia. C (H7)	Boss Dia. D	Overall Length E	Face Width F	Boss Proj G	Bore Length H	Mounting Length J	Mounting Length X	Catalogue No.
1.5	20	32.59	30	8	25	22.3	9	12.58	21	40		<b>AMB15-20-S-60</b>
2.0	20	43.46	40	12	32	26.39	12	13.05	24	50		<b>AMB20-20-S-60</b>
2.5	20	54.33	50	14	40	30.49	15	13.82	28	60		<b>AMB25-20-S-60</b>
3.0	20	65.19	60	16	50	34.59	18	15.16	32	70		<b>AMB30-20-S-60</b>

**Material**

Steel BS970 Pt. 3 1991 080M46

or equivalent

All dimensions in millimetres.  
Pressure angle 20°.

These bevel gears are cut to the Gleason System.

Bore tolerances to BS. 4500: 1969, H7.

General tolerances unless otherwise stated  $\pm 0.25$ .Angular accuracy between shafts  $\pm 0^{\circ}5'$ .Shaft axes should intersect within  $\pm 0.025$ .

Mounting distance tolerance

(Dimn. x)  $\begin{matrix} +NIL \\ -0.05 \end{matrix}$ 

These gears are not hardened.

These gears cannot be run with any other series.

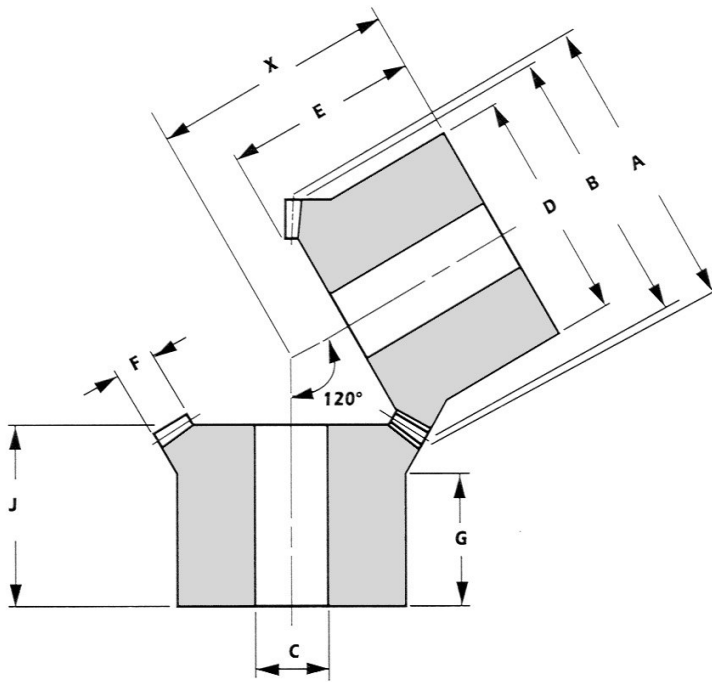
# DAVALL GEARs Bevel Gears

Angled shaft 120°

Steel 1.5 to 3.0 MODULE

**RATIO 1:1**

GEARS



Pitch MOD	No. of Teeth	Outside Dia. A	Pitch Dia. B	Bore Dia. C (H7)	Boss Dia. D	Overall Length E	Face Width F	Boss Proj G	Bore Length J	Mounting Length X	Catalogue No.
1.5	20	31.5	30	8	26	20.69	5	13.88	18	26	<b>AMB15-20-S-120</b>
2.0	20	42	40	12	34	26.89	6.5	17.26	24	34	<b>AMB20-20-S-120</b>
2.5	20	52.5	50	14	42	33.22	8.5	20.64	29	42	<b>AMB25-20-S-120</b>
3.0	20	63	60	16	50	39.39	10	24.02	35	50	<b>AMB30-20-S-120</b>

#### Material

Steel BS970 Pt. 3 1991 080M46

or equivalent

All dimensions in millimetres.

Pressure angle 20°.

These bevel gears are cut to the Gleason System.

Bore tolerances to BS. 4500: 1969, H7.

General tolerance unless otherwise stated  $\pm 0.25$ .

Angular accuracy between shafts  $\pm 0^\circ-5'$ .

Shaft axes should intersect within  $\pm 0.025$ .

Mounting distance tolerance

(Dimn. x)  $\begin{matrix} + \text{NIL} \\ - 0.05 \end{matrix}$

These gears are not hardened.

These gears cannot be run with any other series.