

	No. of Teeth	Inside Dia A	Pitch Dia B	Root Dia. C	Outside Dia. D	Facewidth F	Catalogue Ref
0.5 mod	60	29	30.0	31.25	50	3	MIC- 05 - 60 SS
	72	35	36.0	37.25	55	3	MIC- 05 - 72 SS
	80	39	40.0	41.25	60	3	MIC- 05 - 80 SS
	84	41	42.0	43.25	65	3	MIC- 05 - 84 SS
	90	44	45.0	46.25	70	3	MIC- 05 - 90 SS
	96	47	48.0	49.25	70	3	MIC- 05 - 96 SS
	100	49	50.0	51.25	75	3	MIC- 05 - 100 SS
	108	53	54.0	55.25	75	3	MIC- 05 - 108 SS
	120	59	60.0	61.25	80	3	MIC- 05 - 120 SS
0.8 mod	60	46.4	48.0	50.0	80	7	MIC- 08 - 60 SS
	72	56.0	57.6	59.6	85	7	MIC- 08 - 72 SS
	80	62.4	64.0	66.0	90	7	MIC- 08 - 80 SS
	84	65.6	67.2	69.2	95	7	MIC- 08 - 84 SS
	90	70.4	72.0	74.0	100	7	MIC- 08 - 90 SS
	96	75.2	76.8	78.8	105	7	MIC- 08 - 96 SS
	100	78.4	80.0	82.0	105	7	MIC- 08 - 100 SS
	108	84.8	86.4	88.4	110	7	MIC- 08 - 108 SS
	120	94.4	96.0	98.0	120	7	MIC- 08 - 120 SS
1.0 mod	60	58.0	60.0	62.5	90	10	MIC- 10 - 60 -S
	72	70.0	72.0	74.5	100	10	MIC- 10 - 72 -S
	80	78.0	80.0	82.5	110	10	MIC- 10 - 80 -S
	84	82.0	84.0	86.5	115	10	MIC- 10 - 84 -S
	90	88.0	90.0	92.5	120	10	MIC- 10 - 90 -S
	96	94.0	96.0	98.5	125	10	MIC- 10 - 96 -S
	100	98.0	100.0	102.5	130	10	MIC- 10 - 100 -S
	108	106.0	108.0	110.5	140	10	MIC- 10 - 108 -S
	120	118.0	120.0	122.5	150	10	MIC- 10 - 120 -S

Pressure angle 20°.  
 Manufactured to BS.978: 1968, Pt. 1,  
 Fig. 1, Class B.  
 General tolerance unless otherwise  
 stated  $\pm 0.010''$ .  
 These gears are not hardened.

**Material**

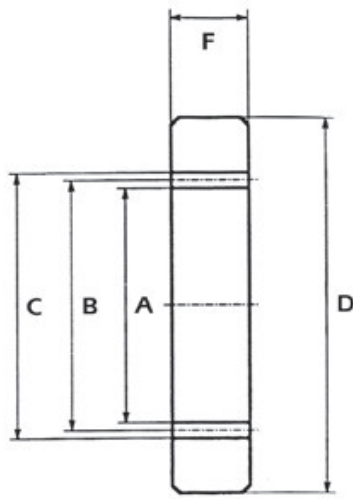
Steel BS970 Pt.1 1991 080M15 (EN32)  
 or BS970 Pt.3 1991 230M07 (EN1A)  
 Brass BS2784:1986 CZ121

# DAVALL GEARs

## Internal Spur Gears

1.5, 2.0, 2.5, 3.0 Mod

Steel



GEARS

Module	No. of Teeth	Inside Dia. A	Pitch Dia. B	Root Dia. C	Outside Dia. D	Facewidth F	Catalogue Ref
1.5	50	72	75.0	78.53	115	15	MIC15-50-S
1.5	60	87	90.0	93.53	130	15	MIC15-60-S
1.5	80	117	120.0	123.53	160	15	MIC15-80-S
1.5	100	147	150.0	153.53	190	15	MIC15-100-S
2.0	50	96	100.0	104.70	150	20	MIC20-50-S
2.0	60	116	120.0	124.70	170	20	MIC20-60-S
2.0	80	156	160.0	164.70	210	20	MIC20-80-S
2.0	100	196	200.0	204.70	250	20	MIC20-100-S
2.0	120	236	240	244.70	286	20	MIC20-120-S
2.0	200	396	400	404.70	446	20	MIC20-200-S
2.5	50	120	125	130.88	185	25	MIC25-50-S
2.5	60	145	150	155.88	210	25	MIC25-60-S
2.5	80	195	200	205.88	260	25	MIC25-80-S
2.5	120	295	300	305.88	355	25	MIC25-120-S
2.5	200	495	500	505.88	555	25	MIC25-200-S
3.0	50	144	150	157.05	220	30	MIC30-50-S
3.0	60	174	180	187.05	250	30	MIC30-60-S
3.0	120	354	360	367.05	424	30	MIC30-120-S
3.0	160	474	480	487.05	544	30	MIC30-160-S

Pressure angle 20°.  
Manufactured to BS.978: 1968, Pt. 1,  
Fig. 1, Class B.

General tolerance unless otherwise  
stated  $\pm 0.010''$ .

These gears are not hardened.

Standard pcd

#### Material

Steel BS970 Pt.3 1991 080M40 (EN8)

or equivalent