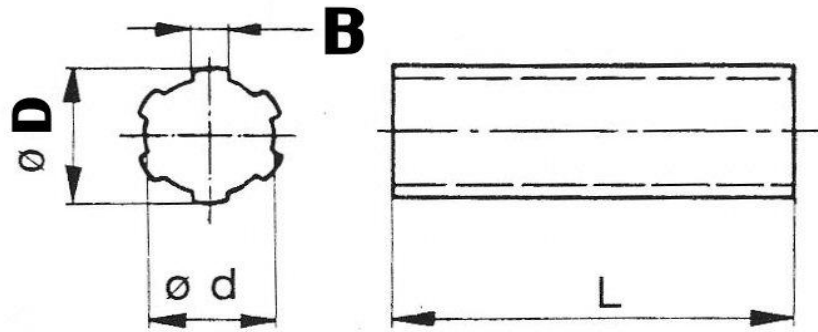


## SPLINE shaft and SPLINE bore sleeve

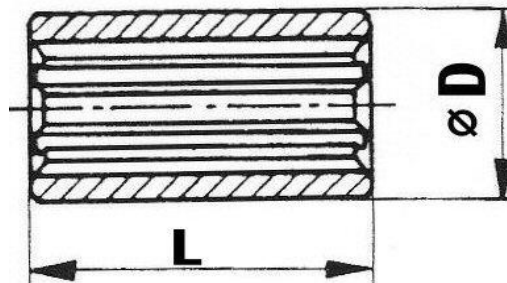


shaft  
material  
steel 080M40 (or similar)

number of spline	outside diameter D (mm)	root diameter d (mm)	tooth width B (mm)
Z	-0.07	0	0
	-0.27	-0.08	-0.08
6	14	11	3
6	16	13	3.5
6	20	16	4
6	22	18	5
6	25	21	5
6	28	23	6
6	32	26	6
6	34	28	7
6	34.94 (1-3/8")	28.14 (1.107")	8.64 (0.340")
8	38	32	6
8	42	36	7
8	48	42	8
8	54	46	9

CATALOGUE REFERENCE			
available shaft length (L) mm			
250	500	1000	2000
SHAFT6x14x11-025	SHAFT6x14x11-050	SHAFT6x14x11-100	SHAFT6x14x11-200
SHAFT6x16x13-025	SHAFT6x16x13-050	SHAFT6x16x13-100	SHAFT6x16x13-200
SHAFT6x20x16-025	SHAFT6x20x16-050	SHAFT6x20x16-100	SHAFT6x20x16-200
SHAFT6x22x18-025	SHAFT6x22x18-050	SHAFT6x22x18-100	SHAFT6x22x18-200
SHAFT6x25x21-025	SHAFT6x25x21-050	SHAFT6x25x21-100	SHAFT6x25x21-200
SHAFT6x28x23-025	SHAFT6x28x23-050	SHAFT6x28x23-100	SHAFT6x28x23-200
SHAFT6x32x26-025	SHAFT6x32x26-050	SHAFT6x32x26-100	SHAFT6x32x26-200
SHAFT6x34x28-025	SHAFT6x34x28-050	SHAFT6x34x28-100	SHAFT6x34x28-200
SHAFT6x1-3/8-025	SHAFT6x1-3/8-050	SHAFT6x1-3/8-100	SHAFT6x1-3/8-200
SHAFT8x38x32-025	SHAFT8x38x32-050	SHAFT8x38x32-100	SHAFT8x38x32-200
SHAFT8x42x36-025	SHAFT8x42x36-050	SHAFT8x42x36-100	SHAFT8x42x36-200
SHAFT8x48x42-025	SHAFT8x48x42-050	SHAFT8x48x42-100	SHAFT8x48x42-200
SHAFT8x54x46-025	SHAFT8x54x46-050	SHAFT8x54x46-100	SHAFT8x54x46-200

Sleeve  
material  
steel 212M36 (or similar)



to suit spline

number of spline	D (mm)	d (mm)
Z	-0.07	0
	-0.27	-0.08
6	14	11
6	16	13
6	20	16
6	22	18
6	25	21
6	25	21
6	28	23
6	32	26
6	34	28
6	34.94 (1-3/8")	28.14 (1.107")
6	34.94 (1-3/8")	28.14 (1.107")
8	38	32
8	42	36
8	48	42
8	54	46

L	D	catalogue reference
40	30	SLEEVE6x14x11-S
40	35	SLEEVE6x16x13-S
40	40	SLEEVE6x20x16-S
40	42	SLEEVE6x22x18-S
40	45	SLEEVE6x25x21-45-S
60	38	SLEEVE6x25x21-38-S
60	50	SLEEVE6x28x23-S
60	60	SLEEVE6x32x26-S
60	70	SLEEVE6x34x28-S
60	75	SLEEVE6x1-3/8-75-S
80	50.8 (2")	SLEEVE6x1-3/8-50-S
60	75	SLEEVE8x38x32-S
60	80	SLEEVE8x42x36-S
60	90	SLEEVE8x48x42-S
60	90	SLEEVE8x54x46-S