

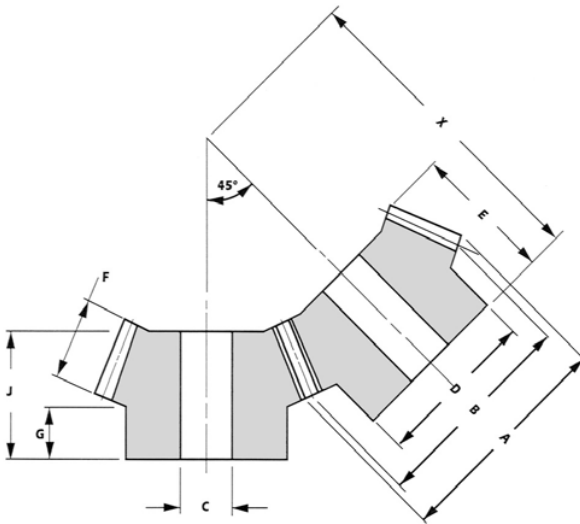
Bevel Gears

Angled shaft 45°

Steel 1.5 to 3.0 module

Ratio 1:1

GEARS



Mod	No. Teeth	Outside Dia. A	Pitch Dia. B	Bore Dia. C	Boss Dia. D	Overall Length E	Face Width F	Boss Projection G	Bore Length H	Mounting Distance J	Catalogue Reference Steel
1.5	20	32.77	30	8	25	19.33	11	7.75	18	45	AMB15-20-S-45
2	20	43.69	40	10	30	26.08	15	9.65	24	60	AMB2020-S-45
2.5	20	54.62	50	12	40	31.92	18	12.58	30	75	AMB2520-S-45
3	20	65.54	60	14	50	38.66	22	15.51	36	90	AMB3020-S-45

Pitch line angle of gears 22° 30'

Material

Steel BS970 Pt.1 1991 080M46

All dimensions in millimetres

Pressure angle 20°

These bevel gears are cut to the Gleason System.

Bore tolerance to BS 4500: 1969,H7

General tolerance unless otherwise stated ± 0.25

Angular accuracy between shafts $\pm 0^{\circ} - 5'$.

Shaft axes should intersect within ± 0.025

Mounting distance tolerance (Dimn. X)+NIL, -.005.

These gears are NOT hardened.

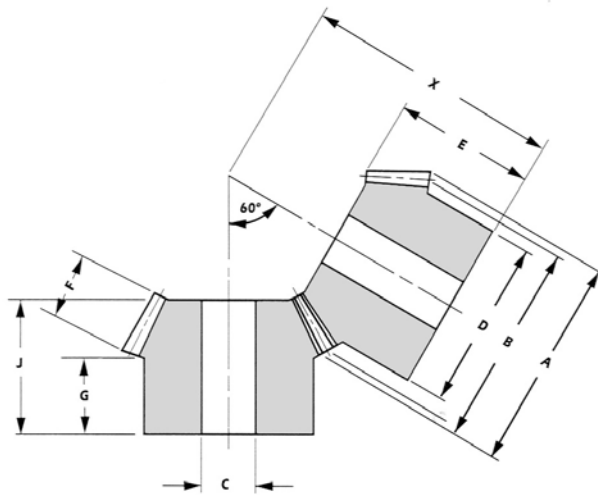
These gears cannot be run with any other series

Bevel Gears

Angled shaft 60°

Steel 1.5 to 3.0 module

Ratio 1:1

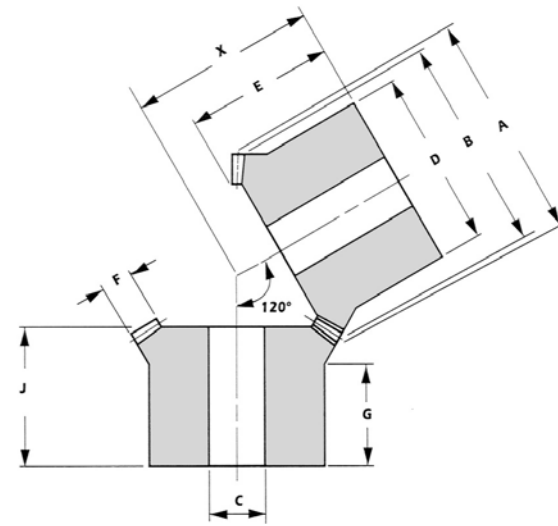


Bevel Gears

Angled shaft 120°

Steel 1.5 to 3.0 module

Ratio 1:1



Mod	No. Teeth	Outside Dia.	Pitch Dia.	Bore Dia.	Boss Dia.	Overall Length	Face Width	Boss Projection	Bore Length	Mounting Distance	Catalogue Reference
		A	B	C	D	E	F	G	J	X	Steel
1.5	20	32.59	30	8	25	22.3	9	12.58	21	40	AMB15-20-S-60
2	20	43.46	40	12	32	26.39	12	13.05	24	50	AMB20-20-S-60
2.5	20	54.33	50	14	40	30.49	15	13.82	28	60	AMB25-20-S-60
3	20	65.19	60	16	50	34.59	18	15.16	32	70	AMB30-20-S-60

Mod	No. Teeth	Outside Dia.	Pitch Dia.	Bore Dia.	Boss Dia.	Overall Length	Face Width	Boss Projection	Bore Length	Mounting Distance	Catalogue Reference
		A	B	C	D	E	F	G	J	X	Steel
1.5	20	31.5	30	8	26	20.69	5	13.88	18	26	AMB15-20-S-120
2	20	42	40	12	34	26.89	6.5	17.26	24	34	AMB20-20-S-120
2.5	20	52.5	50	14	42	33.22	8.5	20.64	29	42	AMB25-20-S-120
3	20	63	60	16	50	39.39	10	24.02	35	50	AMB30-20-S-120

Pitch line angle of gears 30°

Pitch line angle of gears 60°

Material

Steel BS970 Pt.1 1991 080M46

All dimensions in millimetres
Pressure angle 20°
These bevel gears are cut to the Gleason System.
Bore tolerance to BS 4500: 1969,H7
General tolerance unless otherwise stated ±0.25
Angular accuracy between shafts ±0°-5'.
Shaft axes should intersect within ±0.025
Mounting distance tolerance (Dimm. X)+NIL, -.005.

These gears are NOT hardened.
These gears cannot be run with any other series

Material

Steel BS970 Pt.1 1991 080M46

All dimensions in millimetres
Pressure angle 20°
These bevel gears are cut to the Gleason System.
Bore tolerance to BS 4500: 1969,H7
General tolerance unless otherwise stated ±0.25
Angular accuracy between shafts ±0°-5'.
Shaft axes should intersect within ±0.025
Mounting distance tolerance (Dimm. X)+NIL, -.005.

These gears are NOT hardened.
These gears cannot be run with any other series

GEARS

GEARS