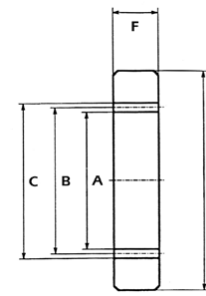
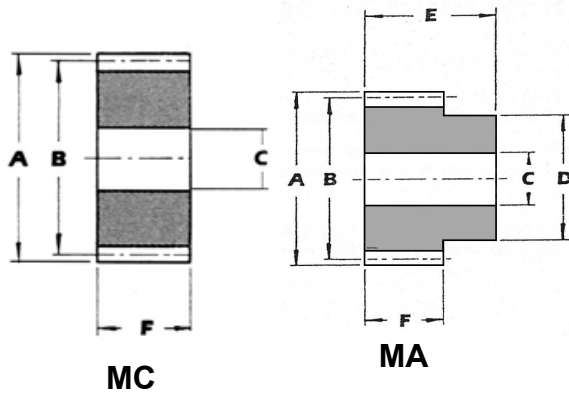


Spur Gears

Circular Pitch(CP)
2.5mm,5mm and 10mm

Steel



Internal Spur Gears

0.5,0.8 and 1 module

Stainless Steel/Steel

GEARS

GEARS

Circular Pitch CP	equivalent Mod	type	No. Teeth	Outside Dia. A	Pitch Dia. B	Bore Dia. C Ø	Boss Dia. D Ø	Overall Length E	Face Width F	Catalogue No.
2.5 mm	0.7958		20	17.51	15.92	6	13	20	10	MA2.5CP- 20 -S
2.5 mm	0.7958		25	21.49	19.89	8	17	20	10	MA2.5CP- 25 -S
2.5 mm	0.7958		30	25.46	23.87	8	21	20	10	MA2.5CP- 30 -S
2.5 mm	0.7958		40	33.42	31.83	10	28	20	10	MA2.5CP- 40 -S
5mm	1.591		12	22.3	19.1	6	14	25	12	MA5CP- 12 -S
5mm	1.591		15	27.0	23.9	6	18	25	12	MA5CP- 15 -S
5mm	1.591		18	31.8	28.6	8	20	25	12	MA5CP- 18 -S
5mm	1.591		20	35.0	31.8	8	20	25	12	MA5CP- 20 -S
5mm	1.591		24	41.4	38.2	8	25	25	12	MA5CP- 24 -S
5mm	1.591		25	43.0	39.8	8	25	25	12	MA5CP- 25 -S
5mm	1.591		30	50.9	47.7	10	30	25	12	MA5CP- 30 -S
5mm	1.591		36	60.5	57.3	10	40	25	12	MA5CP- 36 -S
5mm	1.591		40	66.8	63.6	10	40	25	12	MA5CP- 40 -S
5mm	1.591		45	74.8	71.6	10	45	25	12	MA5CP- 45 -S
5mm	1.591		50	82.7	79.6	12	50	25	12	MA5CP- 50 -S
5mm	1.591		60	98.6	95.5	12	60	25	12	MA5CP- 60 -S
10mm	3.183		12	44.6	38.2	10	25	40	25	MA10CP- 12 -S
10mm	3.183		15	54.1	47.7	12	30	40	25	MA10CP- 15 -S
10mm	3.183		18	63.7	57.3	15	40	40	25	MA10CP- 18 -S
10mm	3.183		20	70.0	63.7	15	40	40	25	MA10CP- 20 -S
10mm	3.183		24	82.8	76.4	15	50	40	25	MA10CP- 24 -S
10mm	3.183		25	85.9	79.6	15	50	40	25	MA10CP- 25 -S
10mm	3.183		30	101.9	95.5	20	60	40	25	MA10CP- 30 -S
10mm	3.183		36	121.0	114.6	20	70	40	25	MA10CP- 36 -S
10mm	3.183		40	133.7	127.3	20	80	40	25	MA10CP- 40 -S
10mm	3.183		45	149.6	143.2	20	-	25	25	MC10CP- 45 -S
10mm	3.183		50	165.5	159.2	20	-	25	25	MC10CP- 50 -S
10mm	3.183		60	197.3	191.0	25	-	25	25	MC10CP- 60 -S

Material

Polyacetal
Steel BS 970 Pt. 1 1991 080M15 (EN32)
Or BS 970 Pt. 3 230M07 (EN1A)
Brass BS2874:1986 CZ121

All dimensions in millimetres
Pressure angle 20°
Manufactured to BS 436:1970 Pt. 1, Fig. 1, Grade 8
Bore tolerances to BS 1916:1953 Pt. 1, H8
General tolerance unless otherwise stated ±0.010"
These gears are NOT hardened

No. of Teeth	Inside Dia A	Pitch Dia B	Root Dia. C	Outside Dia. D	Facewidth F	Catalogue Ref
60	29	30.0	31.25	50	5	MIC-05-60SS
72	35	36.0	37.25	50	5	MIC-05-72SS
80	39	40.0	41.25	50	5	MIC-05-80SS
84	41	42.0	43.25	75	5	MIC-05-84SS
90	44	45.0	46.25	75	5	MIC-05-90SS
96	47	48.0	49.25	75	5	MIC-05-96SS
100	49	50.0	51.25	75	5	MIC-05-100SS
108	53	54.0	55.25	75	5	MIC-05-108SS
120	59	60.0	61.25	75	5	MIC-05-120SS
	A	B	C	D	F	
60	46.4	48.0	50.0	100	8	MIC-08-60SS
72	56	57.6	59.6	100	8	MIC-08-72SS
80	62.4	64.0	66.0	100	8	MIC-08-80SS
84	65.6	67.2	69.2	100	8	MIC-08-84SS
90	70.4	72.0	74.0	100	8	MIC-08-90SS
96	75.2	76.8	78.8	100	8	MIC-08-96SS
100	78.4	80.0	82.0	120	8	MIC-08-100SS
108	84.8	86.4	88.4	120	8	MIC-08-108SS
120	94.4	96.0	98.0	120	8	MIC-08-120SS
	A	B	C	D	F	
60	58.0	60.0	62.5	90	10	MIC-10-60-S
72	70.0	72.0	74.5	100	10	MIC-10-72-S
80	78.0	80.0	82.5	110	10	MIC-10-80-S
84	82.0	84.0	86.5	115	10	MIC-10-84-S
90	88.0	90.0	92.5	120	10	MIC-10-90-S
96	64.0	96.0	98.5	125	10	MIC-10-96-S
100	98.0	100.0	102.5	130	10	MIC-10-100-S
108	106.0	108.0	110.5	140	10	MIC-10-108-S
120	118.0	120.0	122.5	150	10	MIC-10-120-S

Material

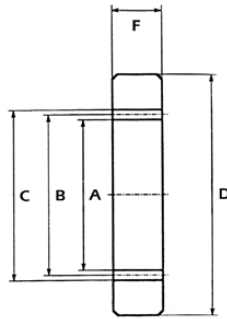
Polyacetal
Steel BS 970 Pt. 1 1991 080M15 (EN32)
Or BS 970 Pt. 3 230M07 (EN1A)
Brass BS2874:1986 CZ121

All dimensions in millimetres
Pressure angle 20°
Manufactured to BS 436:1970 Pt. 1, Fig. 1, Grade 8
Bore tolerances to BS 1916:1953 Pt. 1, H8
General tolerance unless otherwise stated ±0.010"
These gears are NOT hardened

Internal Spur Gears

1.5, 2.0, 2.5, 3.0 Mod

Steel



GEARS

	No. of Teeth	Inside Dia A	Pitch Dia B	Root Dia. C	Outside Dia. D	Facewidth F	Catalogue Ref
1.5 mod	50	72	75.0	78.53	115	15	MIC-15-50-S
	60	87	90.0	93.53	130	15	MIC-15-60-S
	80	117	120.0	123.53	160	15	MIC-15-80-S
	100	147	150.0	153.53	190	15	MIC-15-100-S
2.0 mod	50	96	100.0	104.70	150	20	MIC-20-50-S
	60	116	120.0	124.70	170	20	MIC-20-60-S
	80	156	160.0	164.70	210	20	MIC-20-80-S
	100	196	200.0	204.70	250	20	MIC-20-100-S
	120	236	240	244.70	286	20	MIC-20-120-S
	200	396	400	404.70	446	20	MIC-20-200-S
2.5 mod	50	120	125	130.88	185	25	MIC-25-50-S
	60	145	150	155.88	210	25	MIC-25-60-S
	80	195	200	205.88	260	25	MIC-25-80-S
	120	295	300	305.88	355	25	MIC-25-120-S
	200	495	500	505.88	555	25	MIC-25-200-S
3.0 mod	50	144	150	157.05	220	30	MIC-30-50-S
	60	174	180	187.05	250	30	MIC-30-60-S
	120	354	360	367.05	424	30	MIC-30-120-S
	160	474	480	487.05	544	30	MIC-30-160-S

Material

Polyacetal
Steel BS 970 Pt. 1 1991 080M15 (EN32)
Or BS 970 Pt. 3 230M07 (EN1A)
Brass BS2874:1986 CZ121

All dimensions in millimetres
Pressure angle 20°
Manufactured to BS 436:1970 Pt. 1, Fig. 1, Grade 8
Bore tolerances to BS 1916:1953 Pt. 1, H8
General tolerance unless otherwise stated ± 0.010 "
These gears are NOT hardened