

# Twin Power Belts

## HD and Classical

## Dimensions

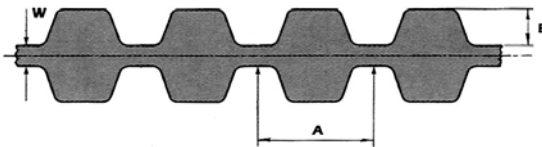
Twin power timing belts have been developed for use where it is necessary to use a single belt to drive a series of pulleys in clockwise and anti-clockwise directions without changing direction of rotation of the driving pulley. This has been achieved by providing teeth directly opposite each other on either side of a central flat web. They have similar construction to other synchronous timing belts i.e they have a strong tensile number; precision formed polychloroprene teeth and body and wear resistant nylon fabric covering.

### Advantages

- \* High load transmitting capacity
- \* Ability to transmit 100% of its maximum rated load from either side of the belt or in combination where the sum of the loads to be transmitted does not exceed the maximum rating of the belt.
- \* Non slip positive drive
- \* NO lubrication and minimum maintenance

**Please note: POWERGRIP GT Belts are not available in TwinPower form**

### Twin Power - 'Classical belt dimensions

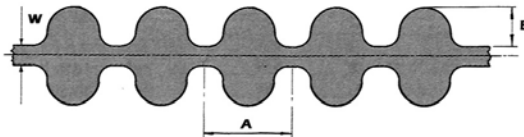


<i>Belt pitch type</i>	<i>Pitch A</i>	<i>Tooth height B</i>	<i>Thickness W</i>
------------------------	----------------	-----------------------	--------------------

Classical pitch - in inches

MXL	0.080	NOT AVAILABLE	
XL	0.200	0.050	0.020
L	0.375	0.075	0.030
H	0.500	0.090	0.054

### Twin Power - 'HTD' belt dimensions



<i>Belt pitch type</i>	<i>Pitch A</i>	<i>Tooth height B</i>	<i>Thickness W</i>
------------------------	----------------	-----------------------	--------------------

HTD pitch - in millimetres

3M	3	NOT AVAILABLE	
5M	5	2.1	1.143
8M	8	3.40	1.372
14M	14	6.00	2.794

# Twin Power Belts

## HD and Classical

### Dimensions

To order a belt quote the belt code number followed by the belt width code number e.g. TP240XL037

XL pitch ( 0.2" )			
belt code		pitch length (ins)	teeth
TP 150 XL ***		15.0	75
TP 160 XL ***		16.0	80
TP 170 XL ***		17.0	85
TP 180 XL ***		18.0	90
TP 190 XL ***		19.0	95
TP 200 XL ***		20.0	100
TP 210 XL ***		21.0	105
TP 220 XL ***		22.0	110
TP 230 XL ***		23.0	115
TP 240 XL ***		24.0	120
TP 250 XL ***		25.0	125
TP 260 XL ***		26.0	130
TP 280 XL ***		28.0	140
TP 300 XL ***		30.0	150
TP 310 XL ***		31.0	155
TP 340 XL ***		34.0	170

L pitch ( 0.375" )			
belt code		pitch length (ins)	teeth
TP 210 L ***		21.0	56
TP 225 L ***		22.5	60
TP 240 L ***		24.0	64
TP 255 L ***		25.5	68
TP 270 L ***		27.0	72
TP 285 L ***		28.5	76
TP 300 L ***		30.0	80
TP 322 L ***		32.25	86
TP 345 L ***		34.5	92
TP 367 L ***		36.75	98
TP 390 L ***		39.0	104
TP 420 L ***		42.0	112
TP 450 L ***		45.0	120
TP 480 L ***		48.0	128
TP 510 L ***		51.0	136
TP 540 L ***		54.0	144
TP 600 L ***		60.0	160

H pitch ( 0.5" )			
belt code		pitch length (ins)	teeth
TP 360 H ***		36.0	72
TP 390 H ***		39.0	78
TP 420 H ***		42.0	84
TP 450 H ***		45.0	90
TP 480 H ***		48.0	96
TP 510 H ***		51.0	102
TP 540 H ***		54.0	108
TP 570 H ***		57.0	114
TP 600 H ***		60.0	120
TP 630 H ***		63.0	126
TP 660 H ***		66.0	132
TP 700 H ***		70.0	140
TP 750 H ***		75.0	150
TP 800 H ***		80.0	160
TP 850 H ***		85.0	170
TP 900 H ***		90.0	180
TP 1000 H ***		100.0	200
TP 1250 H ***		125.0	250
TP 1400 H ***		140.0	280
TP 1700 H ***		170.0	340

XL width	code
1/4"	025
3/8"	037

L width	code
1/2"	050
3/4"	075
1"	100

H width	code
3/4"	075
1"	100
1-1/2"	150
2"	200
3"	300

5M pitch ( 5mm )			
belt code		pitch length (mm)	teeth
TP 425 5M **		425.0	85
TP 475 5M **		475.0	95
TP 500 5M **		500.0	100
TP 600 5M **		600.0	120
TP 615 5M **		615.0	123
TP 640 5M **		640.0	128
TP 670 5M **		670.0	134
TP 700 5M **		700.0	140
TP 755 5M **		755.0	151
TP 800 5M **		800.0	160
TP 835 5M **		835.0	167
TP 890 5M **		890.0	178
TP 935 5M **		935.0	187
TP 1100 5M **		1100.0	220
TP 1200 5M **		1200.0	240

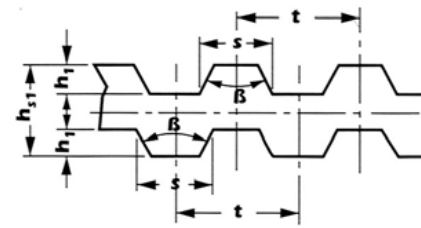
8M pitch ( 8mm )			
belt code		pitch length (mm)	teeth
TP 480 8M **		480.0	60
TP 560 8M **		560.0	70
TP 600 8M **		600.0	75
TP 640 8M **		640.0	80
TP 720 8M **		720.0	90
TP 800 8M **		800.0	100
TP 880 8M **		880.0	110
TP 960 8M **		960.0	120
TP 1040 8M **		1040.0	130
TP 1120 8M **		1120.0	140
TP 1200 8M **		1200.0	150
TP 1280 8M **		1280.0	160
TP 1360 8M **		1360.0	170
TP 1440 8M **		1440.0	180
TP 1600 8M **		1600.0	200
TP 1760 8M **		1760.0	220
TP 1800 8M **		1800.0	225
TP 2000 8M **		2000.0	250
TP 2400 8M **		2400.0	300
TP 2600 8M **		2600.0	325
TP 2800 8M **		2800.0	350

14M pitch ( 14mm )			
belt code		pitch length (mm)	teeth
TP 1610 14M **		1610.0	115
TP 1778 14M **		1778.0	127
TP 1890 14M **		1890.0	135
TP 2100 14M **		2100.0	150
TP 2310 14M **		2310.0	165
TP 2450 14M **		2450.0	175
TP 2590 14M **		2590.0	185
TP 2800 14M **		2800.0	200
TP 3150 14M **		3150.0	225

5M width	code
9 mm	09
15 mm	15
25 mm	25

8M width	code
20 mm	20
30 mm	30
50 mm	50

14M width	code
40 mm	40
55 mm	55
85 mm	85



Construction: Polyurethane with steel wire cord

# Twin Power Belts

### Dimensions

Type	t(mm)	h(t)/mm	h(s)/mm	S	β
T5DL	5	1.2	3.4	2.65	40°
T10DL	10	2.5	7	5.3	40°

(Nominal dimensions -mm)

Type T5 DL - 5mm pitch			
Code No.		pitch length mm	No. of teeth
300	-T5- width - DL	300.0	60
350	-T5- width - DL	350.0	70
400	-T5- width - DL	400.0	80
410	-T5- width - DL	410.0	82
450	-T5- width - DL	450.0	90
460	-T5- width - DL	460.0	92
480	-T5- width - DL	480.0	96
500	-T5- width - DL	500.0	100
515	-T5- width - DL	515.0	103
550	-T5- width - DL	550.0	110
590	-T5- width - DL	590.0	118
600	-T5- width - DL	600.0	120
620	-T5- width - DL	620.0	124
650	-T5- width - DL	650.0	130
700	-T5- width - DL	700.0	140
750	-T5- width - DL	750.0	150
800	-T5- width - DL	800.0	160
815	-T5- width - DL	815.0	163
850	-T5- width - DL	850.0	170
860	-T5- width - DL	860.0	172
900	-T5- width - DL	900.0	180
940	-T5- width - DL	940.0	188
1100	-T5- width - DL	1100.0	220

Type T10 DL - 10mm pitch			
Code No.		pitch length mm	No. of teeth
260	-T10- width - DL	260.0	26
530	-T10- width - DL	530.0	53
600	-T10- width - DL	600.0	60
630	-T10- width - DL	630.0	63
660	-T10- width - DL	660.0	66
700	-T10- width - DL	700.0	70
720	-T10- width - DL	720.0	72
750	-T10- width - DL	750.0	75
800	-T10- width - DL	800.0	80
840	-T10- width - DL	840.0	84
900	-T10- width - DL	900.0	90
980	-T10- width - DL	980.0	98
1000	-T10- width - DL	1000.0	100
1100	-T10- width - DL	1100.0	110
1200	-T10- width - DL	1200.0	120
1210	-T10- width - DL	1210.0	121
1240	-T10- width - DL	1240.0	124
1250	-T10- width - DL	1250.0	125
1300	-T10- width - DL	1300.0	130
1320	-T10- width - DL	1320.0	132
1350	-T10- width - DL	1350.0	135
1400	-T10- width - DL	1400.0	140
1420	-T10- width - DL	1420.0	142
1500	-T10- width - DL	1500.0	150
1600	-T10- width - DL	1600.0	160
1610	-T10- width - DL	1610.0	161
1700	-T10- width - DL	1700.0	170
1800	-T10- width - DL	1800.0	180
1880	-T10- width - DL	1880.0	188

belt width	belt pitch	
	T5	T10
6	o	
8	o	
10	o	o
12	o	o
16	o	o
20	o	o
25	o	o
32	o	o
50		o

Example of order reference:  
LENGTH-PITCH-WIDTH-DL

e.g. 940-T5-06DL  
1210-T5-20DL

